

24 - 29 / MAY / 2026

desafioruta40.ar

San Juan - San Rafael - San Juan

DR 40

DESAFIO YPF RUTA 40 2026



PCO: +549 (351) 3750219

RALLY GUIDE

ON THE WAY TO A NEW ADVENTURE IN ARGENTINA!

Version May 08



Ministerio de Turismo, Cultura y Deporte



INFINIA RÖD ELAION



INDEX



Introduction	3
The Championships & DR40 Titles	4
Entries	5
Safety Equipment	6
Logistics	7
Programme	8
Private Test	10
The Race	11
Timing Resume	12
FIM Prologue / FIA SHAKEDOWN - San Juan / San Juan	13
SS 1 - San Juan / San Juan	16
SS 2 - San Juan / San Rafael	19
SS 3 - San Rafael / San Rafael	22
SS 4 - San Rafael / San Juan	25
SS 5 - San Juan / San Juan	28
Total Km	31
Bivouacs	32
Autódromo San Juan Villicum - San Juan	33
Centro de Congresos y Exposiciones - San Rafael	34
Useful info & Services	35
Sportity App	38
Officials	39
Hospitals informations	40
Accommodation & Rental Cars	41
Media Info	42
Contacts	43

"THIS DOCUMENT HAS NO REGULATORY POWER FOR INFORMATION ONLY"

INTRODUCTION

2026 DESAFÍO RUTA 40:

San Juan - San Rafael - San Juan

OFFICIAL CHANNELS & SOCIAL MEDIA ACCOUNTS



www.desafioruta40.ar



DR40FIA26

DR40FIM26

DR40OPEN26



[@desafioruta40](https://www.instagram.com/desafioruta40)



<https://www.facebook.com/DesafioRuta40/>



[@desafioruta40ok](https://x.com/desafioruta40ok)



[@Prensa_DR40](https://www.youtube.com/@Prensa_DR40)



[@desafioruta40](https://www.tiktok.com/@desafioruta40)

Desafío Ruta 40, one of the most iconic competitions among South American rally raids, is back.

The race will feature two bivouacs and a total distance of over 2,700 kilometres, of which more than 1,600 kilometres will be selective sections. Thanks to simplified logistics, the route for this 13th edition promises to be a spectacular competition.

The city of San Juan (capital of the province of the same name) will be the venue for both the start and finish, consolidating its position as one of the most traditional venues in the history of this race.

Undoubtedly, one of the great attractions of Desafío Ruta 40 will be the eagerly awaited return to the province of Mendoza, more precisely to San Rafael, ten years after the competition last visited this city. The return to Mendoza reaffirms DR40's connection with one of the most significant natural landscapes in terms of sporting significance and visual impact.

The variety of terrain will mark the five days of competition, with sand playing a starring role. Crossing the dunes of El Nihuil, which will once again be part of the route after a nine-year absence, will be one of the most demanding and attractive challenges of the 2026 edition.

Desafío Ruta 40 combines a great sporting challenge, unique locations and the experience of competing in iconic landscapes, in an edition that promises to mark a new chapter in the remarkable legacy of DR40.

THE CHAMPIONSHIP & DR40 TITLES

Desafío Ruta 40 will be valid for the third round of 2026 World Rally Raid Championship (W2RC).

These are the trophies that will be given at Desafío Ruta 40:

W2RC PRIZES:

- 1st FIA World Rally-Raid Championship for Drivers/Navigators/Manufacturers
- 1st FIA Rally-Raid Championship for Stock Drivers/Navigators/Manufacturers
- 1st FIA Rally-Raid Championship for Challenger Drivers /Navigators
- 1st FIA Rally-Raid Championship for SSV Drivers/Navigators/Manufacturers
- 1st FIA Rally-Raid Championship for Teams
- 1st FIA Rally-Raid Championship for Master Drivers
- 1st FIM World Rally-Raid Championship (Riders/Manufacturers)
- 1st FIM Rally-Raid World Cup for Rally2
- 1st FIM Rally2 World Cup for Teams
- 1st FIM Rally-Raid World Cup for Rally3
- 1st FIM Rally-Raid World Cup for Quad

EVENT PRICES GIVEN BY THE ORGANIZER:

- Desafío Ruta 40 Ultimate overall winners (1º,2º,3º)
- Desafío Ruta 40 Stock overall winners (1º,2º,3º)
- Desafío Ruta 40 Challenger overall winners (1º,2º,3º)
- Desafío Ruta 40 SSV overall winners (1º,2º,3º)
- Desafío Ruta 40 Trucks overall winners (1º,2º,3º)
- Desafío Ruta 40 RallyGP overall winners (1º,2º,3º)
- Desafío Ruta 40 Rally2 overall winners (1º,2º,3º)
- Desafío Ruta 40 Rally3 overall winners (1º,2º,3º)
- Desafío Ruta 40 Quad overall winners (1º,2º,3º)
- Desafío Ruta 40 Veteran overall Trophy (1º,2º,3º)
- Desafío Ruta 40 Junior overall Trophy (1º,2º,3º)
- Desafío Ruta 40 Women overall Trophy (1º,2º,3º)
- Desafío Ruta 40 Malle Moto Rally2 overall winners (1º, 2º, 3º)
- Desafío Ruta 40 Malle Moto Rally3 overall winners (1º, 2º, 3º)
- Desafío Ruta 40 Malle Moto Quad overall winners (1º, 2º, 3º)
- Desafío Ruta 40 Open Autos Open T1 Nafta overall winners (1º, 2º, 3º)
- Desafío Ruta 40 Open Autos Open T1 Diesel overall winners (1º, 2º, 3º)
- Desafío Ruta 40 Open UTV Open (T3) overall winners (1º, 2º, 3º)
- Desafío Ruta 40 Open UTV Open (T4) overall winners (1º, 2º, 3º)
- SSV Road to Dakar Challenge winner
- Desafío Ansenzuza M1 - N overall winners (1º, 2º, 3º)
- Desafío Ansenzuza Q1 - N overall winners (1º, 2º, 3º)
- Desafío Ansenzuza T2 - N overall winners (1º, 2º, 3º)
- Desafío Ansenzuza T3 - N overall winners (1º, 2º, 3º)

ENTRIES

REGISTRATION CLOSES MAY 4

CATEGORIES



FIM: BIKES (RALLYGP – RALLY2 – RALLY3) – QUADS – MALLE MOTO*

FIA: ULTIMATE – STOCK – CHALLENGER – SSV – TRUCKS

OPEN: CARS – UTV

ENTRY FEES

Categories	Before March 16	After March 17
FIM: RALLY GP/RALLY 2/RALLY 3/QUAD/MALLE MOTO*	€4150	€ 4.600
FIA: ULTIMATE / STOCK / CHALLENGER / SSV	€7.200	€8.000
FIA: TRUCK	€8.200	€9.000
OPEN: CARS (T.1 PETROL - T.1 DIESEL) / UTV (T.3 - T.4) ***	€7.200 ***	€8.000 ***
ASSISTANCES: PAX	€ 1.100	€ 1.200
ASSISTANCES: CARS / PICK UP	€540	€600
ASSISTANCES: TRUCKS / MOTORHOME	€810	€900

REGISTRATION FEE INCLUDES:

- Meals (From May 23 -noon- to May 29 -noon-)
- Logistics (only) for remote refueling in stages requiring so, for bikes, quads, challenger and SSV
- Competitors' sporting rights
- Participation in the event (administrative and scrutineering, prologue and 5 days of racing) sporting documents (RoadBook, Rally Guide, etc.)
- Medical insurance for competitors and assistance personnel regularly registered
- Ambulances and medical helicopters for fast assistance, all equipped with first aid and rescue equipment (for competitors)
- At the bivouac, access to the camping area with bathrooms and showers
- Energy and water supply, and security for motorhomes.
- Awards ceremony

REGISTRATION FEE DOES NOT INCLUDES:

- Fuel
- Navigation and tracking systems (mandatory use) ***

NEW!
MALLE MOTO

ENTRY FORM

REGULATIONS

ROAD TO DAKAR

LIST OF PREPARERS

DESAFIOS ANSENUZA RALLY RAID

(*) Malle Moto: Open to riders of Rally 2, Rally 3 and Quads. For further information, please visit the dedicated section of this category: Malle Moto
 (***) OPEN Car – UTV: The registration fee INCLUDES navigation and tracking systems for the OPEN category only.

SAFETY EQUIPMENT

The organization will make available to all competitors an Iritrack tracking system (Marlink Company), a GPS navigation system (ERTF Competition), and an integrated vehicle-to-vehicle Sentinel alert system (ERTF Competition), the use of which is mandatory through out the event, and through out the entire route. Failing to have any of these systems, the competitor will not be allowed to start. These systems must remain connected and switched on at all time.

All rally competitors must have these systems properly fitted into their vehicle to pass Scrutineering. The cost of these devices is NOT included in the registration fee and must be requested and paid directly to Marlink and ERTF.



CONTACTS

Marlink

Vincent HERENT

E-mail: services.events@marlink.com

Phone: +33 (0)6.83.14.01.63

ERTF

Cross-Country Rally Department:

E-mail: competition@ertf.com

Phone: +33(2) 97 87 07 08

LOGISTICS

Import of material
to Argentina



**FULL
INFORMATION**

Waiver Logistics has been appointed as Official Freight Forwarder to carry out the customs and logistic coordination for the event.

ROUND TRIP: PORTUGAL - DR40 BIVOUAC - ROTTERDAM

BIKE*

€ 2.200

Rack: 2,20 x 0,75 x 1,25

*1 bike + 1 front wheel + 1 rear wheel + 1 front tire + 1 rear tire.

QUAD

€4.400

SSV/CHALLENGER

€9.000

CAR

€14.000

OWN CONTAINER*

€ 21.300

*Land transport Buenos Aires Port-Bivouac-Buenos Aires Port is not included.

PALLET*

€2.200

*Pallet size: 2200 mm (maximum height) x 800 mm (width) x 1200 mm (length)

BOX*

€300

*80cm (length) x 45cm (width) x 35cm (maximum height)

STEP BY STEP

1. Drop off your bikes/vehicles in Portugal, after the bp Ultimate Rally-Raid Portugal
2. Collect your vehicles directly at the San Juan bivouac
3. Enjoy the rally
4. Drop off your vehicles at the end of the rally at the San Juan bivouac
5. Collect your vehicles in Rotterdam in mid-July

PROGRAMME

Rally Time: GMT -3
subject to modifications

Date – Time	Activity	Place	Date – Time	Activity	Place
Monday, December 1	ENTRIES OPEN	Event Website	08:30 - 18:00 hrs	Scrutineering for FIA (Optional for W2RC crews) & FIM	Autódromo San Juan Villicum
Thursday, February 12	Media Permanent Accreditations open	Event Website		Pre-scrutineering available for W2RC crews upon request	Autódromo San Juan Villicum
Saturday, February 28	Rally Guide publication	Event website & Sportity	10:00 - 17:00 hrs 18:30 hrs	Private Test for FIM/FIA (optional) First FIM Jury meeting	Albardón Autódromo San Juan Villicum
Monday, March 16	Closing date for entries at reduced fee	Event Website	20:00 hrs	General Briefing and photo team (compulsory)	Centro Cívico - Salón Eloy Camus
Saturday, March 28	Publication of supplementary regulations	Event website & Sportity		Publication of list of FIM riders authorized to start	Sportity
Monday, May 4	Closing date for entries	Event Website		Publication of start list for FIM Prologue	Sportity
Tuesday, May 12	Closing of Media Permanent accreditations Publication of entry list	Event Website Event website & Sportity		Welcome cocktail for competitors	Centro Cívico - Salón Eloy Camus
Friday, May 22			Sunday, May 24		
09:00 hs - 17:00 hrs	Bivouac opening	Autódromo San Juan Villicum	7:00 - 11:00 hrs	Administrative Checks for FIA W2RC crews	Autódromo San Juan Villicum
10:00 hs - 15:00 hrs	Administrative Checks for Open and Desafío Ansenuza	Autódromo San Juan Villicum	7:30 - 11:30 hrs	Scrutineering for FIA W2RC crews	Autódromo San Juan Villicum
11:00 - 16:00 hrs	Scrutineering for Open and Desafío Ansenuza	Autódromo San Juan Villicum	12:00 - 13:00 hrs	Re-Scrutineering for FIA vehicles which did not pass scrutineering	Autódromo San Juan Villicum
			11:00 hrs	Team Managers meeting (by invitation only)	Autódromo San Juan Villicum
			12:00 - 14:00 hs	PROLOGUE (For FIM competitors, OPEN -after the last bike- and Ansenuza -after the last OPEN)	Albardón
Saturday, May 23			13:30 hrs	Publication of list of FIA crews authorized to start	Sportity
09:00 - 17:00 hrs	HQ opening	Autódromo San Juan Villicum	13:30 hrs	Publication of starting order list for Stage 1 for FIA	Sportity
09:00 - 17:00 hrs	Media Center and Media Accreditation opening	Autódromo San Juan Villicum	13:30 hrs	Publication of ceremonial start order for FIA/FIM	Sportity
08:00 - 17:00 hrs	Administrative checks for FIA (Optional for W2RC crews) & FIM	Autódromo San Juan Villicum	14:00 - 16:00 hs	Shakedown (For FIA competitors - Optional)	Albardón
	Collection of material and documents	Autódromo San Juan Villicum	16:00 hs	Publication of Prologue provisional classification	Sportity
08:00 - 17:00 hrs	Collection of rally safety tracking system	Autódromo San Juan Villicum	17:30 hrs	Pre-Start holding area opens	Centro Cultural Conte Grand
			18:00 hrs	Autograph session (open for all competitors)	Centro Cultural Conte Grand
			18:30 hrs	Pre-Start holding area closes	Centro Cultural Conte Grand
			18:30 hrs	Pre-Event Press Conference	Centro Cultural Conte Grand
			19:10 hrs	FIM Selection of starting order for Stage 1	Centro Cultural Conte Grand
			19:20 hrs	Ceremonial start-ramp	Centro Cultural Conte Grand
			20:00 hrs	Publication of starting order for FIM Stage 1	Sportity

Date – Time	Activity	Place	Date – Time	Activity	Place
Monday, May 25	Stage 1: SAN JUAN - SAN JUAN		Thursday, May 28	Stage 4: SAN RAFAEL (MENDOZA) - SAN JUAN	
6:45 hrs	Start Stage 1 (Estimated time 1st bike Biv-out)	Autódromo San Juan Villicum	5:55 hrs	Start Stage 4 (Estimated time 1st bike Biv-out)	Centro de Congresos y Exposiciones
9:07 hrs	Start Stage 1 (Estimated time 1st car Biv-out)	Autódromo San Juan Villicum	8:17 hrs	Start Stage 4 (Estimated time 1st car Biv-out)	Centro de Congresos y Exposiciones
13:13 hrs	Finish Stage 1 (Estimated time 1st bike Biv-in)	Autódromo San Juan Villicum	14:28 hrs	Finish Stage 4 (Estimated time 1st bike Biv-in)	Autódromo San Juan Villicum
15:07 hrs	Finish Stage 1 (Estimated time 1st car Biv-in)	Autódromo San Juan Villicum	16:21 hrs	Finish Stage 4 (Estimated time 1st car Biv-in)	Autódromo San Juan Villicum
19:00 hrs	Publication of stage classification	Sportity	19:00 hrs	Publication of stage classification	Sportity
20:00 hrs	W2RC Medal Ceremony	Autódromo San Juan Villicum	20:00 hrs	W2RC Medal Ceremony	Autódromo San Juan Villicum
	Competitors Briefing			Competitors Briefing	
20:30 hrs	Publication of starting list Stage 2	Sportity	20:30 hrs	Publication of starting list Stage 5	Sportity
Tuesday, May 26	Stage 2: SAN JUAN - SAN RAFAEL (MENDOZA)		Friday, May 29	Stage 5: SAN JUAN - SAN JUAN	
6:30 hrs	Start Stage 2 (Estimated time 1st bike Biv-out)	Autódromo San Juan Villicum	5:55 hrs	Start Stage 5 (Estimated time 1st bike Biv-out)	Autódromo San Juan Villicum
8:37 hrs	Start Stage 2 (Estimated time 1st car Biv-out)	Autódromo San Juan Villicum	8:22 hrs	Start Stage 5 (Estimated time 1st car Biv-out)	Autódromo San Juan Villicum
15:26 hrs	Finish Stage 2 (Estimated time 1st bike Biv-in)	Centro de Congresos y Exposiciones	12:52 hrs	Finish Stage 5 (Estimated time 1st bike Biv-in)	Autódromo San Juan Villicum
17:27 hrs	Finish Stage 2 (Estimated time 1st car Biv-in)	Centro de Congresos y Exposiciones	14:49 hrs	Finish Stage 5 (Estimated time 1st car Biv-in)	Autódromo San Juan Villicum
19:00 hrs	Publication of stage classification	Sportity		Final scrutineering, immediately after	Plaza 25 de Mayo
20:00 hrs	W2RC Medal Ceremony	Centro de Congresos y Exposiciones	16:30 hrs	Post-Event Press Conference	Plaza 25 de Mayo
	Competitors Briefing		16:30 hrs	Publication of the provisional classification	Sportity
20:30 hrs	Publication of starting list Stage 3	Sportity	17:00 hrs	Podium - Prize giving ceremony	Plaza 25 de Mayo
Wednesday, May 27	Stage 3: SAN RAFAEL - SAN RAFAEL (MENDOZA)			Publication of the provisional classification "after the stewards have declared the Classification final"	Sportity
7:25 hrs	Start Stage 3 (Estimated time 1st bike Biv-out)	Centro de Congresos y Exposiciones			
9:32 hrs	Start Stage 3 (Estimated time 1st car Biv-out)	Centro de Congresos y Exposiciones			
15:02 hrs	Finish Stage 3 (Estimated time 1st bike Biv-in)	Centro de Congresos y Exposiciones			
17:01 hrs	Finish Stage 3 (Estimated time 1st car Biv-in)	Centro de Congresos y Exposiciones			
19:00 hrs	Publication of stage classification	Sportity			
20:00 hrs	W2RC Medal Ceremony	Centro de Congresos y Exposiciones			
	Competitors Briefing				
20:30 hrs	Publication of starting list Stage 4	Sportity			

PRIVATE TEST

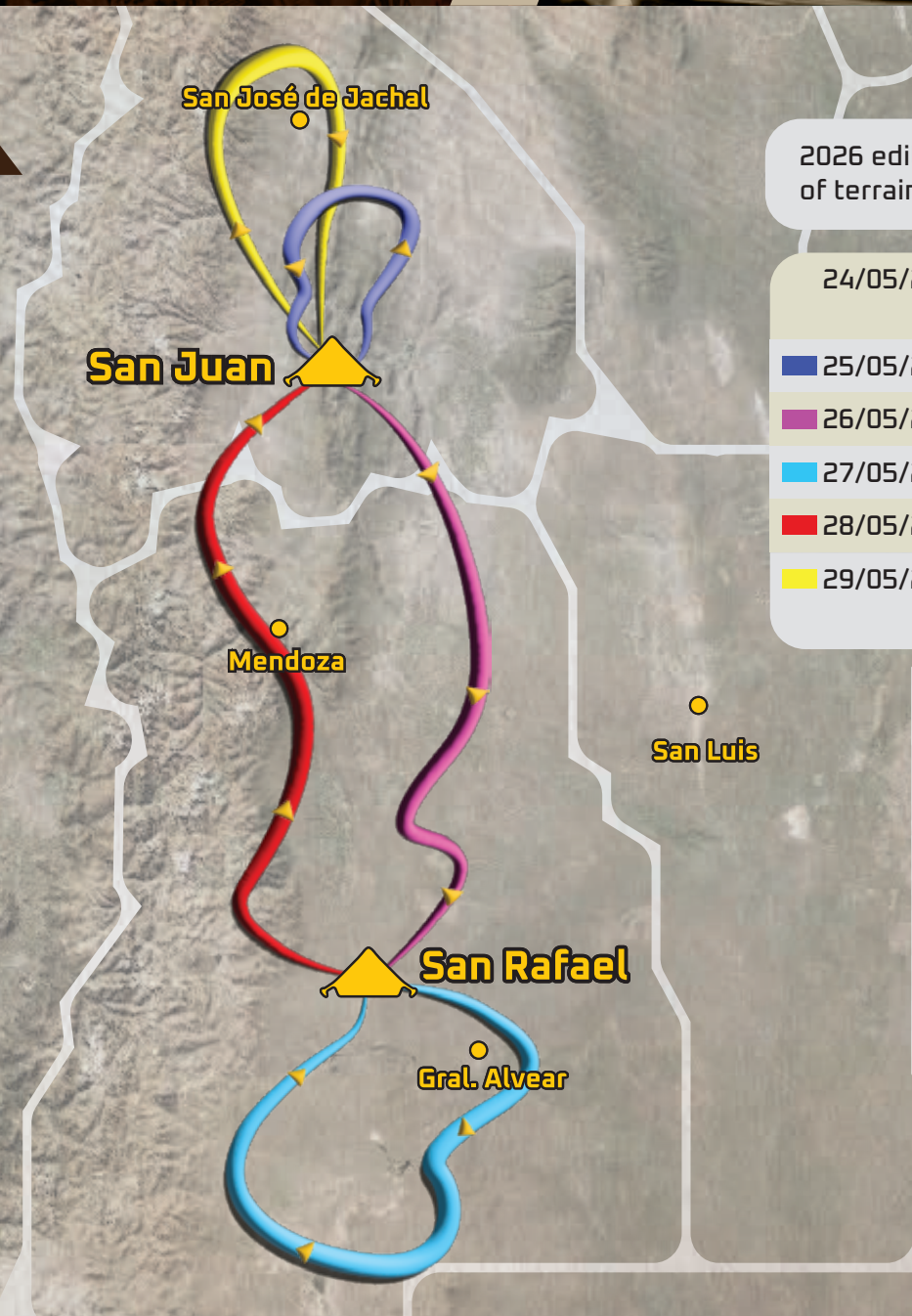
On Saturday May 23, from 10 to 17hs, there will be a Private Test in Albardón, San Juan.

Competitors must collect their safety equipment before attending the private test.

LOCATION

GPS: 31° 19,867'S - 68° 28,312'W

THE RACE



2026 edition will feature a significant variety of terrains, where sand will be the key player.

24/05/26	FIM Prologue / FIA Shakedown Ceremony of Start	
25/05/26	STAGE 1	San Juan - San Juan
26/05/26	STAGE 2	San Juan - San Rafael
27/05/26	STAGE 3	San Rafael - San Rafael
28/05/26	STAGE 4	San Rafael - San Juan
29/05/26	STAGE 5	San Juan - San Juan Prize Giving Ceremony



TIMING RESUME

Rally Time: GMT -3
subject to modifications

Stage	Date	Start City	Finish City	START FROM BIVOUAC				SS START				ASS (ESTIMATED)				BIVOUAC (ESTIMATED)			
				Control Opening	1st Bike / Quad	1st Car	Control closing	Control Opening	1st Bike / Quad	1st Car	Control closing	Control Opening	1st Bike / Quad	1st Car	Control closing	Control Opening	1st Bike / Quad	1st Car	Control closing
				GENERAL BRIEFING: 20:00 hs															
Prologue	May 24	San Juan	San Juan	10:45	11:45	-	14:50	11:00	12:00	-	16:15	11:06	12:06	-	16:35	11:12	12:12	-	17:30
Stage 1	May 25	San Juan	San Juan	05:45	06:45	09:07	10:44	07:15	08:15	10:37	12:14	11:18	12:18	14:19	18:55	12:13	13:13	15:07	20:10
				BRIEFING STAGE 2: 20:00 hs															
Stage 2	May 26	San Juan	San Rafael	05:30	06:30	08:37	10:14	07:15	08:15	10:22	11:59	11:41	12:41	14:42	18:54	14:26	15:26	17:27	22:24
				BRIEFING STAGE 3: 20:00 hs															
Stage 3	May 27	San Rafael	San Rafael	06:25	07:25	09:32	11:09	07:30	08:30	10:37	12:14	12:38	13:38	15:41	20:02	14:02	15:02	17:01	22:02
				BRIEFING STAGE 4: 20:00 hs															
Stage 4	May 28	San Rafael	San Juan	04:55	05:55	08:17	09:54	08:30	09:30	11:52	13:29	12:38	13:38	15:41	19:53	13:28	14:28	16:21	21:08
				BRIEFING STAGE 5: 20:00 hs															
Stage 5	May 29	San Juan	San Juan	04:55	05:55	08:22	09:59	07:20	08:20	10:47	12:24	11:07	12:07	14:09	17:49	11:52	12:52	14:49	18:49

**FIM PROLOGUE
FIA SHAKEDOWN**

**SAN JUAN
SAN JUAN**

24 / 05 / 26

DESCRIPTION



It will be a short summary of what the riders and drivers will face during the Desafío Ruta 40 YPF. The start will be along the course of a dry riverbed, wide and fast at the beginning before narrowing further on, just before a major fork. The route then changes direction and surface until reaching a fast but narrow and highly technical track. It will not merely be a formality; it will be a mini-stage to start warming up the engines and wrists.

**FIM PROLOGUE
FIA SHAKEDOWN**

**SAN JUAN
SAN JUAN**

24 / 05 / 26

MAP

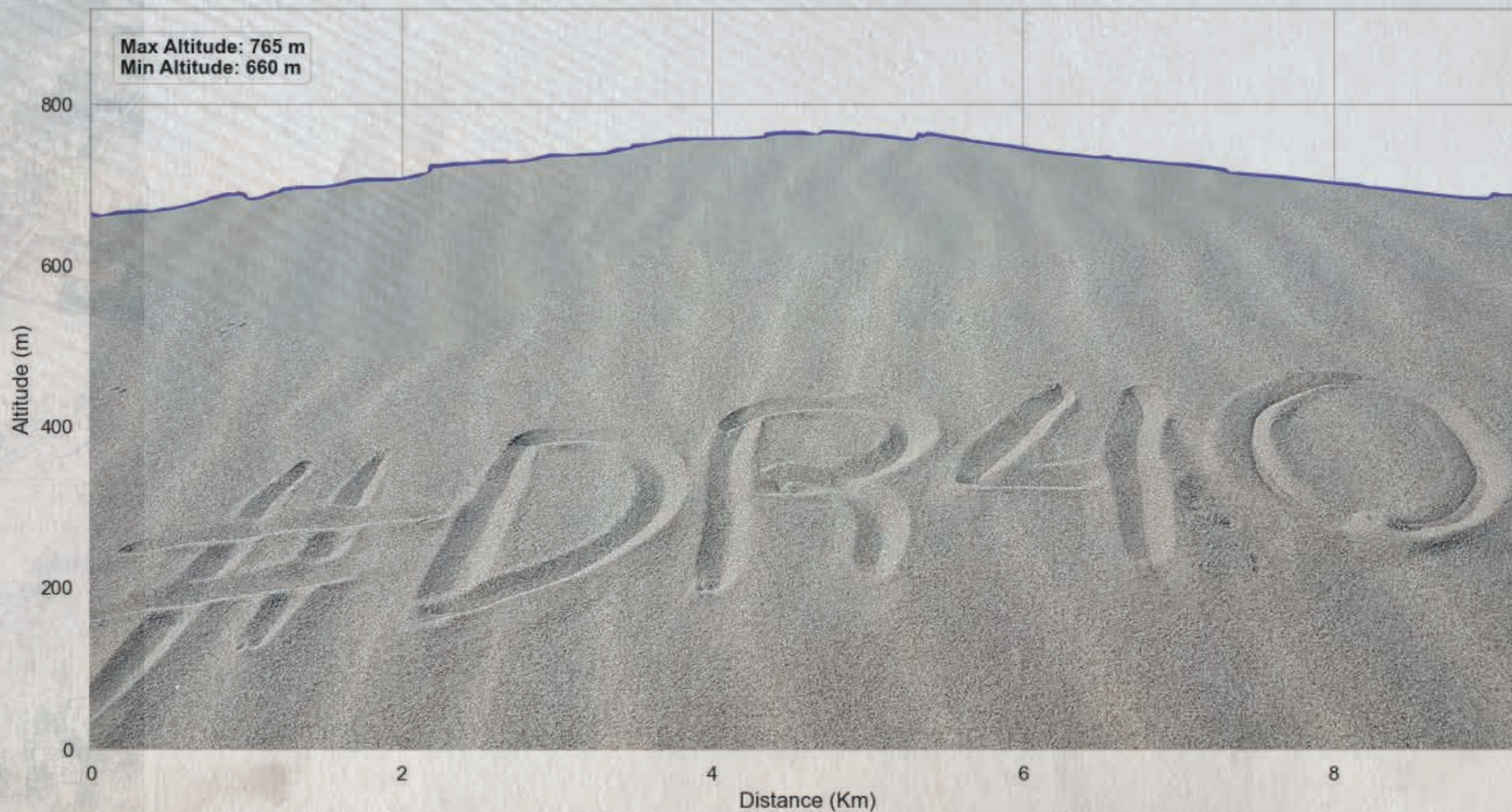


**FIM PROLOGUE
FIA SHAKEDOWN**

**SAN JUAN
SAN JUAN**

24 / 05 / 26

**ELEVATION
PROFILE**



SS 1

SAN JUAN SAN JUAN

25 / 05 / 26

DESCRIPTION



The start of the 2026 Desafío Ruta 40 YPF will take place across a wide variety of terrains, and landscapes – certainly some of the most stunning views. With the foothills of the Andes as an ever-present backdrop, the race will begin amidst imposing gorges before entering a vast, fast-flowing salt flat, where drivers must pay close attention to their direction.

The route will alternate between dry riverbeds of varying characteristics: some wide with good ground, others more confined between ravines, and others requiring very slow passage with many branches, making concentration a necessary skill.

The river connections consist of tracks with varied layouts and routes which, in some cases, are very clear and in others not so much. There are also tracks that appear parallel to them but which can lead riders and drivers away from the ideal route. A demanding race right from the start.

SS 1

SAN JUAN SAN JUAN

25 / 05 / 26

MAP

70% GRAVEL 10% SAND 20% CHOTT

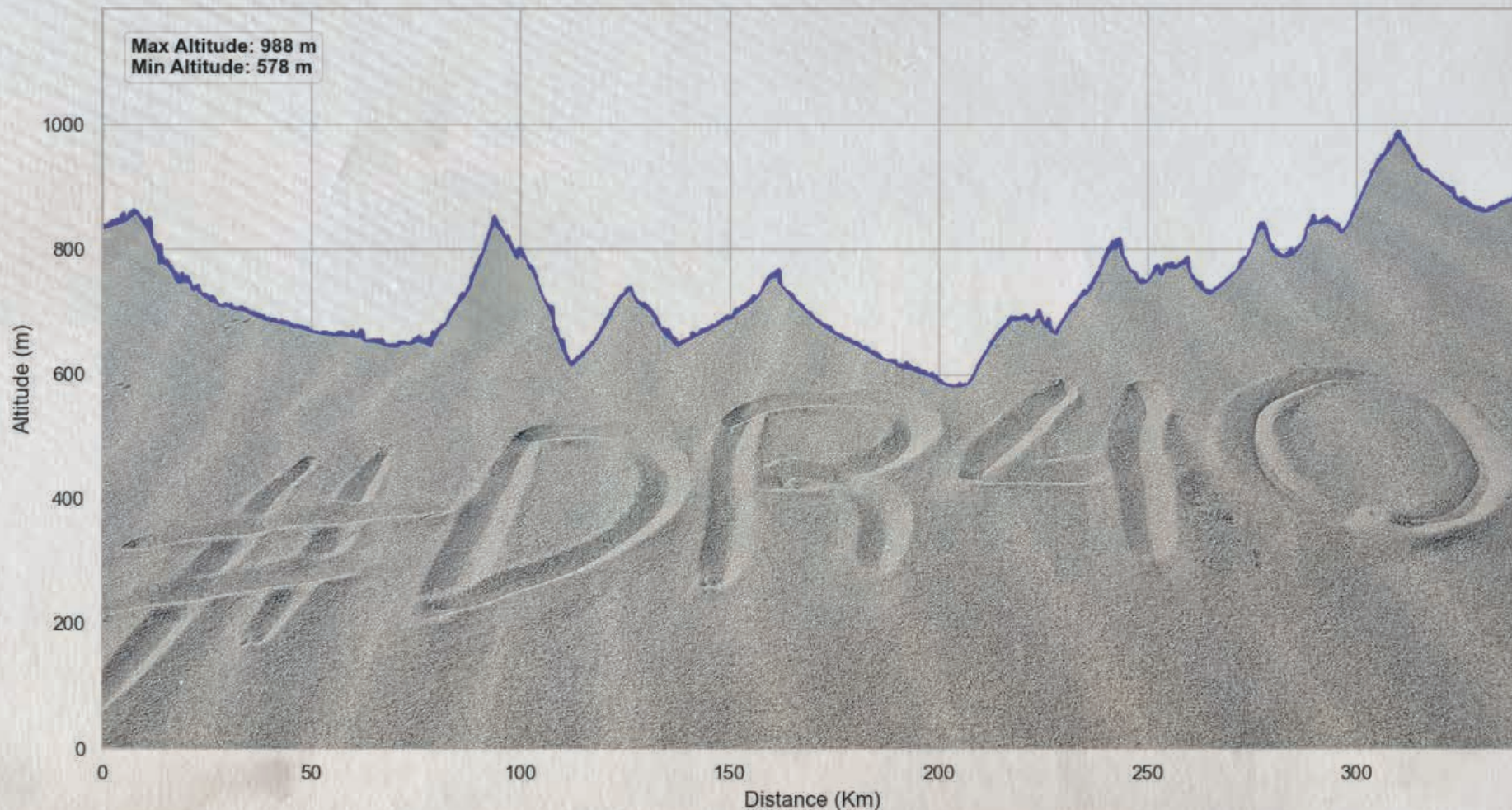


SS 1

**SAN JUAN
SAN JUAN**

25 / 05 / 26

**ELEVATION
PROFILE**



SS 2

SAN JUAN

SAN RAFAEL

26 / 05 / 26

DESCRIPTION



Ruts, tracks, salt flats, sandy terrain and plenty of vegetation sum up a stage that will require particular attention, especially from the navigators. Starting in the province of San Juan and finishing in neighbouring Mendoza, this stage holds secrets hidden in every kilometre.

Precision in staying on the tracks and the correct course will be key. Although the speed and the ability to make quick decisions at every road book indication will also be crucial. Medium and tall vegetation, along with dust in the air, will be the main features of the first few kilometres.

Crossing several short salt flats will be fast thanks to the surface conditions, but finding the correct route out may prove tricky. The same applies to the sandy terrain; whilst not difficult to navigate, it must be tackled with determination and speed.

SS 2

SAN JUAN

SAN RAFAEL

26 / 05 / 26

MAP



SS 2

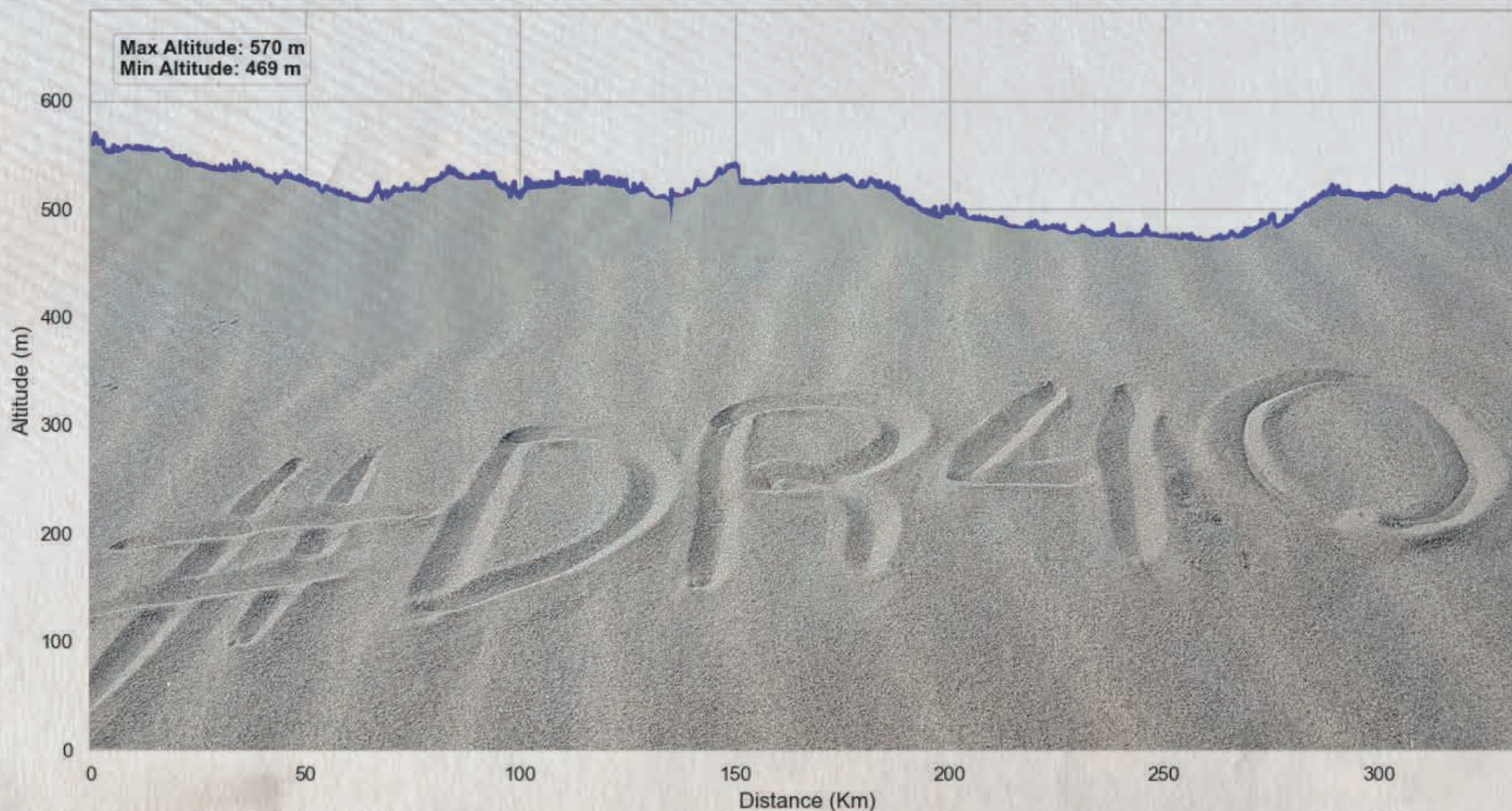
SAN JUAN

SAN RAFAEL

26 / 05 / 26

ELEVATION

PROFILE



SS 3

SAN RAFAEL SAN RAFAEL

27 / 05 / 26

DESCRIPTION



The stage begins along a dry riverbed with a very stony surface, before a change of direction takes the riders and drivers into the dunes of Nihuil. The riders taking part in the Desafío Ruta 40 will have to navigate the dunes of Mendoza and find the right line to avoid losing time at the start of the third day of competition. This will be the main dune section of the competition, a challenging terrain that the drivers are looking forward to with high hopes.

After passing through the classic sands of Nihuil, the race heads into various dry riverbeds, each with distinct characteristics, ranging from fast sections and technical terrain to a few kilometres of narrow, boxed-in sections, all set against striking landscapes. For the final section, the race route takes the riders and drivers along mountainous roads, typical of rallying, which demand proper driving technique and which will challenge the driving skills of the riders and drivers alike.

SS 3

SAN RAFAEL SAN RAFAEL

27 / 05 / 26

MAP

	45% GRAVEL		15% SAND
	20% CHOTT		15% DUNES
	5% ASPHALT		

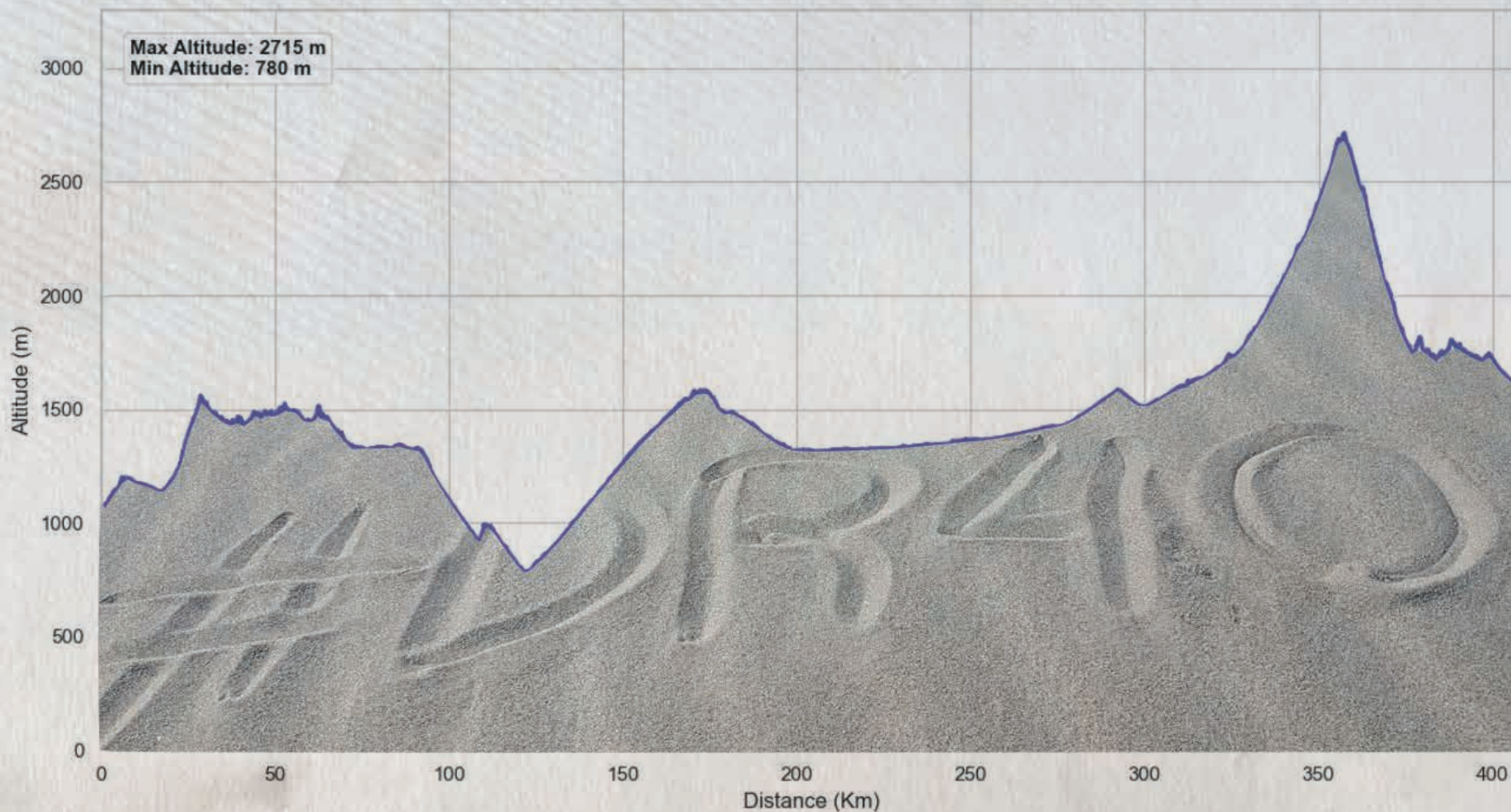


SS 3

SAN RAFAEL SAN RAFAEL

27 / 05 / 26

ELEVATION PROFILE



SS 4

SAN RAFAEL SAN JUAN

28 / 05 / 26

DESCRIPTION



The fourth day of competition is characterised by constant changes in pace as the route winds through the stunning landscapes of northern Mendoza. Right at the start of the stage, the route climbs to over 3,000 metres above the sea level, in a typical rally section featuring winding roads, hairpin bends and deep precipices.

The mountain tracks gradually give way to dry riverbeds, and the route veers off the beaten track on several occasions, so riders and drivers will need to take every change of direction into account to avoid getting lost and to validate all the waypoints.

Towards the end, the race enters a dry riverbed with plenty of off-road sections that will push both the riders and drivers and the machines' limits to the very edge. The final kilometres will once again take place on the fast and tricky Fesh-fesh sections typical of San Juan.

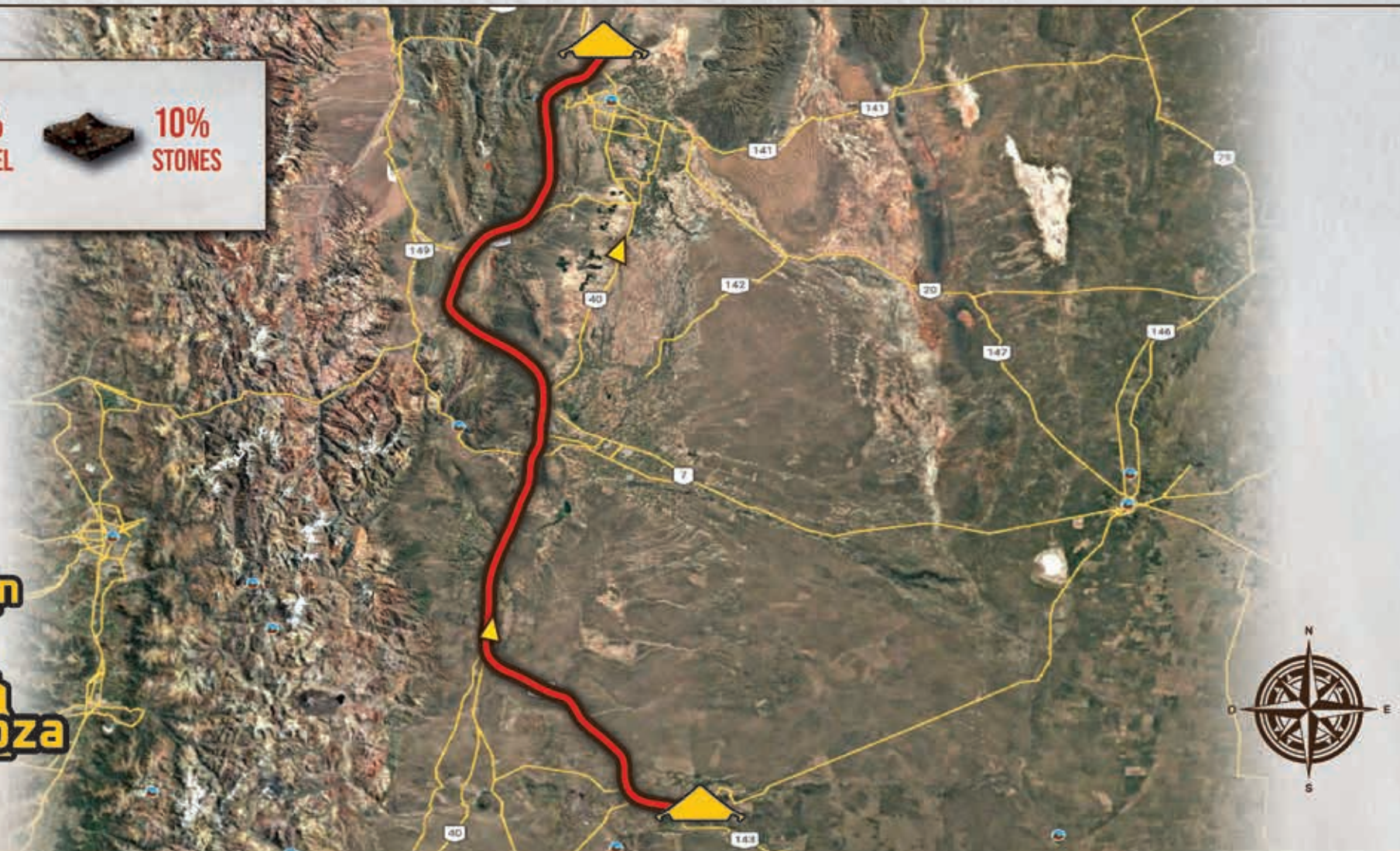
SS 4

SAN RAFAEL SAN JUAN

28 / 05 / 26

MAP

90% GRAVEL **10% STONES**

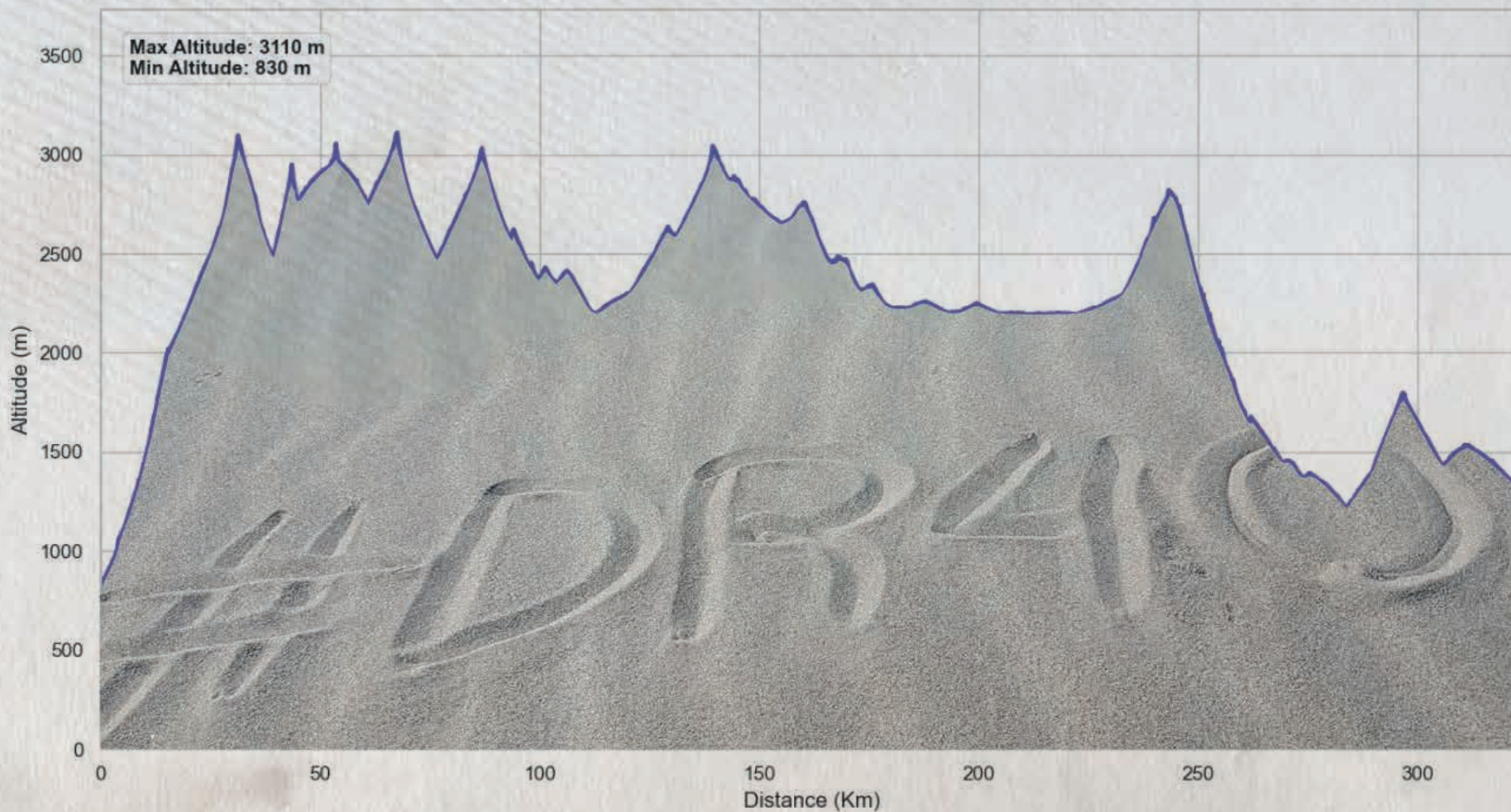


SS 4

**SAN RAFAEL
SAN JUAN**

28 / 05 / 26

**ELEVATION
PROFILE**



SS 5

SAN JUAN SAN JUAN

29 / 05 / 26

DESCRIPTION



The final stage of the 2026 Desafío Ruta 40 YPF will be no walk in the park, but a 320-kilometre stage that will decide the winners of this year's event. The speed section begins near the imposing Cuesta del Viento, skirting a stretch of water along a winding, bumpy track that winds its way through a landscape of colourful mountains and sandy ground, typical of the region. They will then go through high-altitude trails, small streams and several spots where navigation will be crucial.

Towards the end, the race enters the classic 'open desert' of San Juan province, combining tracks with sparse vegetation and dry riverbeds that will force riders and drivers to stay focused and maintain constant attention on the roads and trails to avoid losing their way. Nothing will be decided until the very last kilometre.

SS 5

SAN JUAN SAN JUAN

29 / 05 / 26

MAP



**100%
GRAVEL**

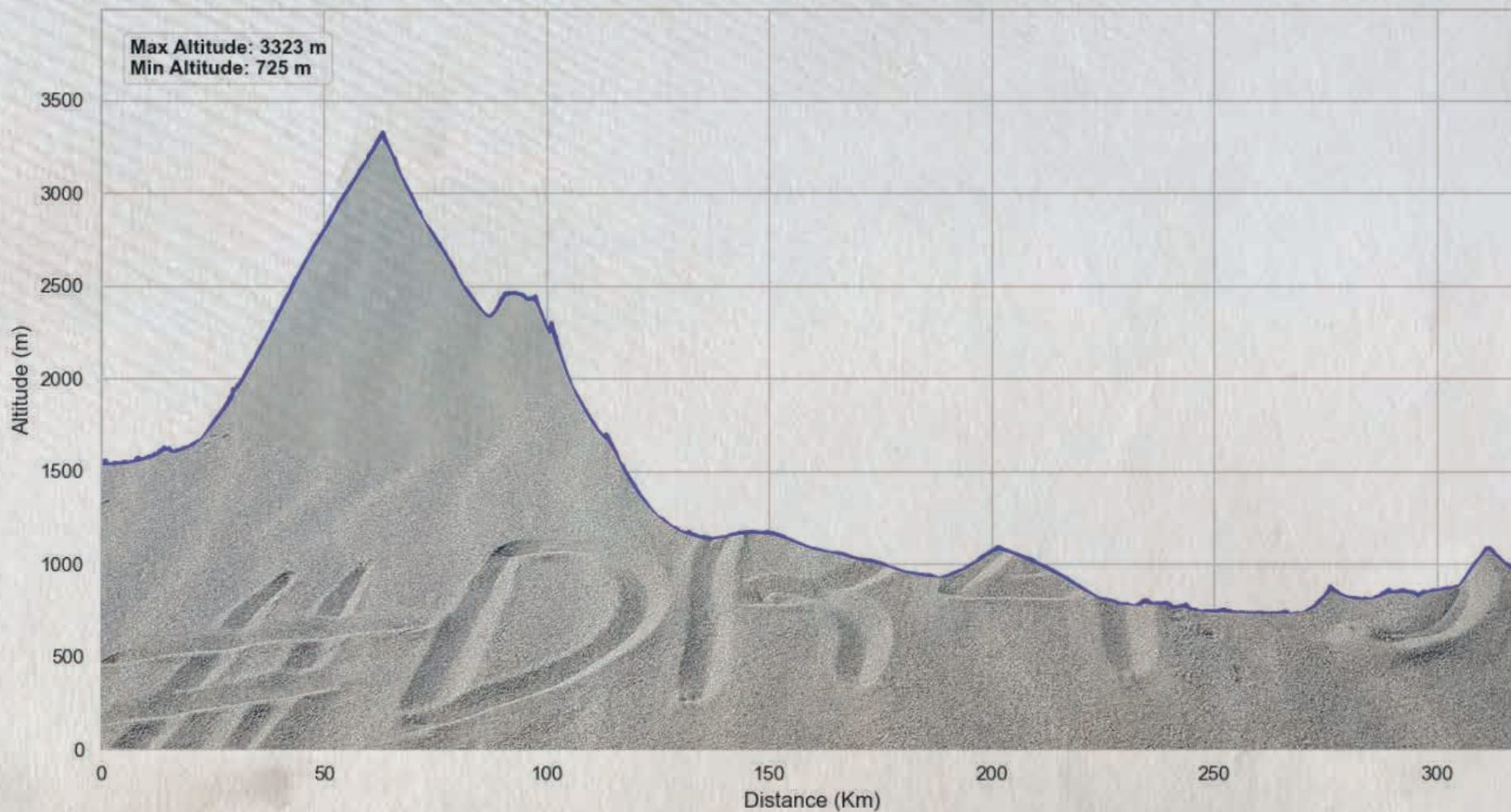


SS 5

SAN JUAN
SAN JUAN

29 / 05 / 26

ELEVATION
PROFILE



TOTAL KM

COMPETITION

Dates		Location	FIA			FIM / OPEN		
			SS	Road Section	Transfer	SS	Road Section	Transfer
May 24	Prologue	San Juan - San Juan	-	-	-	9 Km	13 Km	-
May 25	Stage 1	San Juan - San Juan	340 Km	171 Km	-	340 Km	171 Km	-
May 26	Stage 2	San Juan - San Rafael	334 Km	387 Km	25 Km	334 Km	387 Km	25 Km
May 27	Stage 3	San Rafael - San Rafael	409 Km	166 Km	A: 8 Km / B: 21 Km	409 Km	166 Km	A: 8 Km / B: 21 Km
May 28	Stage 4	San Rafael - San Juan	324 Km	310 Km	-	324 Km	310 Km	-
May 29	Stage 5	San Juan - San Juan	320 Km	232 Km	56 Km	320 Km	232 Km	56 Km
Total SS km			1.727 Km			1.736 Km		
Total Km Road Sections			1.266 km			1.279 km		
Total Km			2.993 km			3.015 km		

ASSISTANCE

Dates	Location	KM	Dates	Location	KM
May 26	San Juan - San Rafael	421	May 28	San Rafael - San Juan	421

BIVOUACS

San Juan

BIVOUAC: Circuito San Juan Villicum

Address: Ruta Nacional 40 - Km 3481, Albardón - San Juan

GPS: 31°23,910'S - 68°34,065'W

Bivouacs opening hours for the public:

Sunday, May 24: 11:00 hs to 20:30 hs

Monday, May 25: 11:00 hs to 20:30 hs

Thursday, May 28: 11:00 hs to 20:30 hs

Friday, May 29: 11:00 hs to 20:30 hs

Admission: Free

San Rafael (Mendoza province)

BIVOUAC: Centro de Congresos y Exposiciones

Address: Luis Tirasso 1025, San Rafael, Mendoza

GPS: 34°36,637'S - 68°18,490'W

Bivouacs opening hours for the public:

Tuesday, May 26: 11:00 hs to 20:30 hs

Wednesday, May 27: 11:00 hs to 20:30 hs

Admission: Free

Catering opening time

Breakfast: 06:00* hs to 10:00 hs

Lunch: 12:00 hs to 15:00 hs

Dinner: 19:00 hs to 23:00 hs

*On Stages 4 and 5, breakfast will be served half an hour before the start of the first bike on stage

AUTÓDROMO SAN JUAN VILLICUM

San Juan

subject to modifications



INGRESO ACCES
Organización
Organisation
Prensa
Media
Autoridades
Authorities

ACCESS INGRESO
Concurrents
Competidores

ACCESS INGRESO
Auxiliary
Auxiliares

ACCESS INGRESO
Espectadores
Spectators

- Keys / Referencias**
- Scrutineering**
Verificación Técnica
 - Administrative Checks**
Verificación Administrativa
 - Time Control**
Control Horario
 - Accreditation**
Recepción
 - GPS**
 - Race Management**
Dirección de Carrera
 - Televisión**

- Keys / Referencias**
- Media Center**
Prensa
 - Custom**
Aduana/Migración
SENASA/SAG
 - Catering**
Restaurant
 - Showers**
Duchas
 - Car Wash**
Lava autos
 - Collecting of Dang. Waste**
Recolect. Residuos Peligrosos

- Keys / Referencias**
- Helicopter**
Helipuerto
 - Ambulance**
Ambulancia
 - Firemen**
Bomberos
 - Energy**
Energía
 - Safety Barrier**
Vallado de seguridad
 - Access Ingress**
 - Competitors**
Competidores
 - Prensa**
Media

31° 23,910' S
68° 34,065' W



USEFUL INFO & SERVICES

USEFUL INFORMATION

TIME ZONE

GMT -3 (three hours behind Greenwich Mean Time) throughout the country.

LANGUAGE

The official language is Spanish, although most of the people who are in the tourist sector also speak English and Portuguese.

CURRENCY

The official currency is the Argentine Peso.

Exchange rate: For information and recommendations on currency exchange, please contact the local Organizer: competitors@desafioruta40.ar

MEASURING SYSTEM

Meters and kilograms

PHONES: HOW TO DIAL

International Country Code: +54

To call an Argentine mobile phone from abroad, you must add a 9 after the country code. (E.g.; +54 9 XXXX)

POWER

All Argentina: 220V – 50Hz

CLIMATE

In Argentina, the climate is mostly temperate. However, the vast size of the country implies a wide climate diversity, ranging from tropical climates in the northwest to sub-polar in the south.

2026 Desafío Ruta 40 will be held during the autumn of Argentina.

USEFUL INFORMATION

AIR CONNECTIVITY

Argentina has a total of 55 airports that guarantee connectivity throughout the country.

- **Buenos Aires: Ministro Pistarini International Airport (EZE)**

It is the most important airport in Argentina, since most of the international flights to our country have this airport as their destination. It is located in the city of Ezeiza, 22 km away from the City of Buenos Aires.

Address: Autopista Tte. Gral. Ricchieri km 33,5, Buenos Aires

Web: <https://www.aa2000.com.ar/ezeiza>

Phone: (+ 54 11) 5480 6111

- **Buenos Aires city: Aeroparque Jorge Newbery (AEP)**

Located in the northwest area of the city of Buenos Aires, 2 km from downtown. It operates domestic flights and international flights to regional countries.

Address: Av. Rafael Obligado s/nº

Web: <https://www.aa2000.com.ar/aeroparque>

Phone: (+54 11) 5480 6111

- **San Juan: Airport Domingo Faustino Sarmiento (UAQ)**

San Juan Airport is located in the city of Las Chacritas, 15km to the southeast of the city of San Juan. It operates domestic flights.

Address: Ruta Nacional Nº 3, Km 8 - (9400)

Web: <https://www.aa2000.com.ar/sanjuan>

Phone: (54 11) 3987 4150

- **San Rafael: Suboficial Ayudante Santiago Germano International Airport (AFA)**

Suboficial Ayudante Santiago Germano International Airport is located 8 km north of San Rafael's downtown area and 232 km south of the city of Mendoza, the province's capital. It offers non-stop flights to Aeroparque Jorge Newbery.

Address: Ruta Provincial N 143, San Rafael, Mendoza

Web: <https://www.aeropuertosargentina.com/es/AFA>

- **Mendoza: International Airport El Plumerillo (MDZ)**

El Plumerillo International Airport is located 11 km from Mendoza in the Las Heras department, north of the city. It is among the most important airports in Argentina because it connects the country to the Cuyo region and all the neighboring countries. It operates domestic flights as well of international flights.

Address: Ruta Nac. Nº 40, Acceso Norte Km 15 - (5539)

Web: <https://www.aeropuertosargentina.com/es/MDZ>

USEFUL INFORMATION

LAND CONNECTIVITY

Argentina has an extensive network of national and provincial roads across its territory.

It is possible to check the status of all border crossings through this link:

<https://www.argentina.gob.ar/seguridad/pasosinternacionales>

VISA

In general, no visa is required to enter the country. For more information, please check the following list:

<https://www.migraciones.gov.ar/accesible/indexdnm.php?visas>

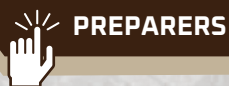
or contact the consular authority.

TRAFFIC

Throughout Argentina, local traffic regulations must be observed. In urban areas, the maximum speed is 40km/h on streets, and 60km/h on avenues.

LIST OF PREPARES

Competitors wishing to attend to Desafío Ruta 40 may rely on this list of preparers

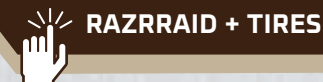


(The organisation of DR40 does not intervene in, nor assume responsibility for, the services, working methods, or budgets agreed upon between teams and racers)

SERVICES

MAXXIS RAID+

Exclusive benefit for registered competitors in Desafío Ruta 40 (Offer available for SSV and Challenger categories).



FUEL

The organizer will be responsible for fuel logistics for the motorcycle and quad categories. Still, fuel costs at the bivouac (and at remote refuelling points) will be borne by competitors.

Fuel must be paid for during the Administrative Checks.

Fuel price will be communicated in upcoming days, before Administrative Checks.

The organizer will provide fuel logistics at remote refuelling points. Refuelling operations may only be carried out in:

- The designated refuelling area within the Bivouac,
- Refuelling zones during neutralisation or transfer sections,
- Locations specifically indicated in the Road Book, or
- Remote refuelling zones established and identified by the Organiser.

SPORTITY APP

**Join DR40
official channels!**

Desafio Ruta 40 will use the Sportity app to keep riders and teams updated on the latest race information. Sportity App can be downloaded from Google Play or AppStore. "Push" notifications show any new document that is posted.

Download from:



Then, download the NEW CHANNELS for 2026 edition:

Sportity

For direct event information please download the Sportity app and insert this password:

DR40FIA26

Sportity app is available in

www.sportity.com

Sportity

For direct event information please download the Sportity app and insert this password:

DR40FIM26

Sportity app is available in

www.sportity.com

Sportity

For direct event information please download the Sportity app and insert this password:

DR40OPEN26

Sportity app is available in

www.sportity.com

OFFICIALS

FIM OFFICIALS

FIM Jury President:	Jean-François WULVERYCK
FIM Jury member:	Mahmoud ESSOUSSI
FIM Second Jury member:	Erick NEVELS
FIM Clerk of de Course:	Robert MENTAVERRI
Technical Director:	Andrés ZALAZAR
FMNR Chief Technical Steward:	Leonardo YOMA
FMNR Chief Medical Officer:	Marcelo ACEVEDO
Environmental Steward:	Vilma VALENZUELA
CRO:	Julieta ULIANA

FIA OFFICIALS

Stewards of the Meeting

Chairperson of the Stewards:	Arnas PALIUKENAS
FIA Steward:	Dmitry MAKHENYA
ASN Steward:	Nicolás CAPUTO

FIA Delegates

FIA Sporting Delegate:	Jérôme ROUSSEL
FIA Technical Delegate:	Christophe VELY
FIA Technical Delegate Assistant:	Clément CLERC
FIA Technical Delegate Assistant:	Janez FLERIN

FIA Clerk of the Course:	Benoit SOULAS
Chief Scrutineer:	Leonardo AGUIRRE
Chief Medical Officer:	Javier OCANTO
Secretary of the Stewards:	Sonia MARTINEZ
CRO FIA:	Rubina MARTIN

OPEN OFFICIALS

FRAD Steward:	Rodolfo DELL OSO
Clerk of the Course:	Hugo GAVILAN
Chief Scrutineer:	Guillermo SCURTO
Chief Medical Officer:	Javier OCANTO
CRO:	Rubina MARTIN

SENIOR OFFICIALS

General Coordinator:	David ELI
W2RC Coordinator:	Alexis RIOLAND
Chief Safety Officer:	Daniel BARBERO
Responsible for the route:	Pablo ELI
Event Media Manager:	Belén OTERO
Results:	MATSPORT
Logistics:	Guillermo ELI
GPS, Iritrack, and Sentinel:	Matias DALMASSO
Event Secretary:	Carina AVILA
Official Opening Car Crew:	Thierry MAGNALDI Jean-Paul COTTRET

HOSPITALS INFORMATIONS

The Desafío Ruta 40 YPF will have a mobile care unit that will be present at bivouacs.

In addition, these are the closest hospitals to each of the bivouacs:

Hospital Rawson (San Juan capital, province of San Juan)

Address: Av. Rawson 494 Sur - Capital, San Juan

GPS Point: <https://maps.app.goo.gl/mSevrW2ifeo9RoBHA>

Hospital Central (Mendoza capital, provincia de Mendoza)

Address: Calle L. N. Alem & Salta, Mendoza capital, Mendoza.

GPS Point: <https://maps.app.goo.gl/DwypkFEcneZ1izhF8>

Hospital Teodoro Schestakow (San Rafael, provincia de Mendoza)

Address: Comandante Torres 170, San Rafael, Mendoza.

GPS Point: <https://maps.app.goo.gl/oEvDBFKZuKAr87Pb8>

PCO +549 (351) 3750219

ACCOMMODATION & RENTAL CARS

For accommodation and rental car solutions for the rally as well excursion, you can rely on our travel agency.

CONTACT

Pablo MIGLIARO

E-mail: maseventosturismo@gmail.com

Phone: +54 9 351 393 9519

MEDIA INFO

MEDIA ACCREDITATIONS

There are 2 types of accreditations:

- **Permanent Accreditation:** Media or Team representative wishing to follow the whole rally transported either by press car, team's vehicle or organization from May 24-29.
- **Daily Accreditation:** For all media outlets representatives (journalists and/or photographers) wishing to come for one up to three stages. (Access of Daily accreditations according to regulations)

Opening date of permanent accreditations: February 12, 2026

Opening date of daily accreditation: April 22, 2026

Closing of Permanent Accreditations: May 12, 2026

Closing of Daily Accreditations: May 20, 2026

Permanent Accreditation: Team Representative

Accreditation fee: €1.100 before March 16. After March 17, €1.200

Permanent Accreditation: Media outlets

Accreditation fee: Free of charge

Permanent Accreditation: Media car

Accreditation fee: According to regulations

Daily Accreditation

Accreditation fee: Free of charge

Footage

Teams and/or sponsors may purchase dedicate footage of the race. For dedicate budget, please contact: prensa@maseventos.com.ar

(Except all W2RC registered manufacturers who may purchase official race footage but must contact directly with ASD).



DR40 PRESS REGULATIONS



CONTACTS

PCO +549 (351) 3750219

SPORTS DIRECTOR AND GENERAL ORGANIZER

Pablo ELI

COMPETITORS RELATIONS OFFICERS

Alicia MARTIN

E-mail: competitors@desafioruta40.ar

TRAVEL AGENCY

Pablo MIGLIARO

E-mail: maseventosturismo@gmail.com

Phone: +54 9 351 393 9519

WAIVER LOGISTICS

Nicolás ALBORNOZ

E-mail: nicolas.albornoz@waiver.com.ar

Phone: +54 911 35037359

W2RC: LOGISTICS

Cédric FOUGERIOL (W2RC)

E-mail: cfougeirol@aso.fr

Phone: +33 6 42 91 99 89

MARLINK

Vincent HERENT

E-mail: services.events@marlink.com

Phone: +33 (0)6.83.14.01.63

ERTF

Cross-Country Rally Department

E-mail: competition@ertf.com

Phone: +33(2) 97 87 07 08

MEDIA

Belén OTERO

E-mail: prensa@maseventos.com.ar

PCO: +549 (351) 3750219



Ministerio de Turismo,
Cultura y Deporte



www.desafioruta40.ar

