

24 - 29 / MAY / 2026

desafioruta40.ar

San Juan - San Rafael - San Juan



RALLY GUIDE

ON THE WAY TO A NEW ADVENTURE
IN ARGENTINA!

Version February 28



WORLD
RALLY-RAID
CHAMPIONSHIP



+eventos



INDEX



Introduction	3
The Championships & DR40 Titles	4
Entries	5
Safety Equipment	6
Logistics	7
Programme	8
The Race	10
Prologue - San Juan / San Juan	11
SS 1 - San Juan / San Juan	12
SS 2 - San Juan / San Rafael	13
SS 3 - San Rafael / San Rafael	14
SS 4 - San Rafael / San Juan	15
SS 5 - San Juan / San Juan	16
Total Km	17
Bivouacs	18
Useful info & Services	19
Sportity App	22
Officials	23
Accommodation & Rental Cars	24
Media Info	25
Contacts	26

**"THIS DOCUMENT HAS NO REGULATORY POWER
FOR INFORMATION ONLY"**

INTRODUCTION

2026 DESAFÍO RUTA 40:

San Juan - San Rafael - San Juan

OFFICIAL CHANNELS & SOCIAL MEDIA ACCOUNTS



www.desafioruta40.ar



DR40FIA26

DR40FIM26

DR40OPEN26



[@desafioruta40](https://www.instagram.com/desafioruta40)



<https://www.facebook.com/DesafioRuta40/>



[@desafioruta40ok](https://x.com/desafioruta40ok)



[@Prensa_DR40](https://www.youtube.com/@Prensa_DR40)



[@desafioruta40](https://www.tiktok.com/@desafioruta40)

Desafío Ruta 40, one of the most iconic competitions among South American rally raids, is back.

The race will feature two bivouacs and a total distance of over 2,700 kilometres, of which more than 1,600 kilometres will be selective sections. Thanks to simplified logistics, the route for this 13th edition promises to be a spectacular competition.

The city of San Juan (capital of the province of the same name) will be the venue for both the start and finish, consolidating its position as one of the most traditional venues in the history of this race.

Undoubtedly, one of the great attractions of Desafío Ruta 40 will be the eagerly awaited return to the province of Mendoza, more precisely to San Rafael, ten years after the competition last visited this city. The return to Mendoza reaffirms DR40's connection with one of the most significant natural landscapes in terms of sporting significance and visual impact.

The variety of terrain will mark the five days of competition, with sand playing a starring role. Crossing the dunes of El Nihuil, which will once again be part of the route after a nine-year absence, will be one of the most demanding and attractive challenges of the 2026 edition.

Desafío Ruta 40 combines a great sporting challenge, unique locations and the experience of competing in iconic landscapes, in an edition that promises to mark a new chapter in the remarkable legacy of DR40.

THE CHAMPIONSHIP & DR40 TITLES

Desafío Ruta 40 will be valid for the third round of 2026 World Rally Raid Championship (W2RC).

These are the trophies that will be given at Desafío Ruta 40:

W2RC PRIZES:

- 1st FIA World Rally-Raid Championship for Drivers/Navigators/Manufacturers
- 1st FIA Rally-Raid Championship for Stock Drivers/Navigators/Manufacturers
- 1st FIA Rally-Raid Championship for Challenger Drivers /Navigators
- 1st FIA Rally-Raid Championship for SSV Drivers/Navigators/Manufacturers
- 1st FIA Rally-Raid Championship for Teams
- 1st FIA Rally-Raid Championship for Master Drivers
- 1st FIM World Rally-Raid Championship (Riders/Manufacturers)
- 1st FIM Rally-Raid World Cup for Rally2
- 1st FIM Rally2 World Cup for Teams
- 1st FIM Rally-Raid World Cup for Rally3
- 1st FIM Rally-Raid World Cup for Quad

EVENT PRICES GIVEN BY THE ORGANIZER:

- Desafío Ruta 40 Ultimate overall winners (1º,2º,3º)
- Desafío Ruta 40 Stock overall winners (1º,2º,3º)
- Desafío Ruta 40 Challenger overall winners (1º,2º,3º)
- Desafío Ruta 40 SSV overall winners (1º,2º,3º)
- Desafío Ruta 40 Trucks overall winners (1º,2º,3º)
- Desafío Ruta 40 RallyGP overall winners (1º,2º,3º)
- Desafío Ruta 40 Rally2 overall winners (1º,2º,3º)
- Desafío Ruta 40 Rally3 overall winners (1º,2º,3º)
- Desafío Ruta 40 Quad overall winners (1º,2º,3º)
- Desafío Ruta 40 Veteran overall Trophy (1º,2º,3º)
- Desafío Ruta 40 Junior overall Trophy (1º,2º,3º)
- Desafío Ruta 40 Women overall Trophy (1º,2º,3º)
- Desafío Ruta 40 Malle Moto Rally2 overall winners (1º, 2º, 3º)
- Desafío Ruta 40 Malle Moto Rally3 overall winners (1º, 2º, 3º)
- Desafío Ruta 40 Malle Moto Quad overall winners (1º, 2º, 3º)
- Desafío Ruta 40 Open Autos Open T1 Nafta overall winners (1º, 2º, 3º)
- Desafío Ruta 40 Open Autos Open T1 Diesel overall winners (1º, 2º, 3º)
- Desafío Ruta 40 Open UTV Open (T3) overall winners (1º, 2º, 3º)
- Desafío Ruta 40 Open UTV Open (T4) overall winners (1º, 2º, 3º)
- SSV Road to Dakar Challenge winner
- Desafío Ansenusa M1 - N overall winners (1º, 2º, 3º)
- Desafío Ansenusa Q1 - N overall winners (1º, 2º, 3º)
- Desafío Ansenusa T2 - N overall winners (1º, 2º, 3º)
- Desafío Ansenusa T3 - N overall winners (1º, 2º, 3º)

ENTRIES

REGISTRATION CLOSES **MAY 4**

CATEGORIES



FIM: BIKES (RALLYGP – RALLY2 – RALLY3) – QUADS – MALLE MOTO*

FIA: ULTIMATE – STOCK – CHALLENGER – SSV – TRUCKS

OPEN: CARS – UTV

ENTRY FEES

Categories	Before March 16	After March 17
FIM: RALLY GP/RALLY 2/RALLY 3/QUAD/MALLE MOTO*	€4150	€ 4.600
FIA: ULTIMATE / STOCK / CHALLENGER / SSV	€7.200	€8.000
FIA: TRUCK	€8.200	€9.000
OPEN: CARS (T.1 PETROL - T.1 DIESEL) / UTV (T.3 - T.4) ***	€7.200 ***	€8.000 ***
ASSISTANCES: PAX	€ 1.100	€ 1.200
ASSISTANCES: CARS / PICK UP	€540	€600
ASSISTANCES: TRUCKS / MOTORHOME	€810	€900

REGISTRATION FEE INCLUDES:

- Meals (From May 23 -noon- to May 29 -noon-)
- Logistics (only) for remote refueling in stages requiring so, for bikes, quads, challenger and SSV
- Competitors' sporting rights
- Participation in the event (administrative and scrutineering, prologue and 5 days of racing) sporting documents (RoadBook, Rally Guide, etc.)
- Medical insurance for competitors and assistance personnel regularly registered
- Ambulances and medical helicopters for fast assistance, all equipped with first aid and rescue equipment (for competitors)
- At the bivouac, access to the camping area with bathrooms and showers
- Energy and water supply, and security for motorhomes.
- Awards ceremony

REGISTRATION FEE DOES NOT INCLUDES:

- Fuel
- Navigation and tracking systems (mandatory use) ***

NEW!
MALLE MOTO

ENTRY FORM

REGULATIONS

ROAD TO DAKAR

LIST OF PREPARERS

DESAFIO ANSENUZA RALLY RAID

(*) Malle Moto: Open to riders of Rally 2, Rally 3 and Quads. For further information, please visit the dedicated section of this category: Malle Moto
 (***) OPEN Car – UTV: The registration fee INCLUDES navigation and tracking systems for the OPEN category only.

SAFETY EQUIPMENT

The organization will make available to all competitors an Iritrack tracking system (Marlink Company), a GPS navigation system (ERTF Competition), and an integrated vehicle-to-vehicle Sentinel alert system (ERTF Competition), the use of which is mandatory through out the event, and through out the entire route. Failing to have any of these systems, the competitor will not be allowed to start. These systems must remain connected and switched on at all time.

All rally competitors must have these systems properly fitted into their vehicle to pass Scrutineering. The cost of these devices is NOT included in the registration fee and must be requested and paid directly to Marlink and ERTF.



CONTACTS

Marlink

Vincent HERENT

E-mail: services.events@marlink.com

Phone: +33 (0)6.83.14.01.63

ERTF

Cross-Country Rally Department:

E-mail: competition@ertf.com

Phone: +33(2) 97 87 07 08

LOGISTICS

Import of material
to Argentina



FULL INFORMATION

Waiver Logistics has been appointed as Official Freight Forwarder to carry out the customs and logistic coordination for the event.

ROUND TRIP: PORTUGAL - DR40 BIVOUAC - ROTTERDAM

BIKE*

€ 2.200

Rack: 2,20 x 0,75 x 1,25

*1 bike + 1 front wheel + 1 rear wheel + 1 front tire + 1 rear tire.

QUAD

€4.400

SSV/CHALLENGER

€9.000

CAR

€14.000

OWN CONTAINER*

€ 21.300

*Land transport Buenos Aires Port-Bivouac-Buenos Aires Port is not included.

PALLET*

€2.200

*Pallet size: 2200 mm (maximum height) x 800 mm (width) x 1200 mm (length)

BOX*

€300

*80cm (length) x 45cm (width) x 35cm (maximum height)

STEP BY STEP

1. Drop off your bikes/vehicles in Portugal, after the bp Ultimate Rally-Raid Portugal
2. Collect your vehicles directly at the San Juan bivouac
3. Enjoy the rally
4. Drop off your vehicles at the end of the rally at the San Juan bivouac
5. Collect your vehicles in Rotterdam in mid-July

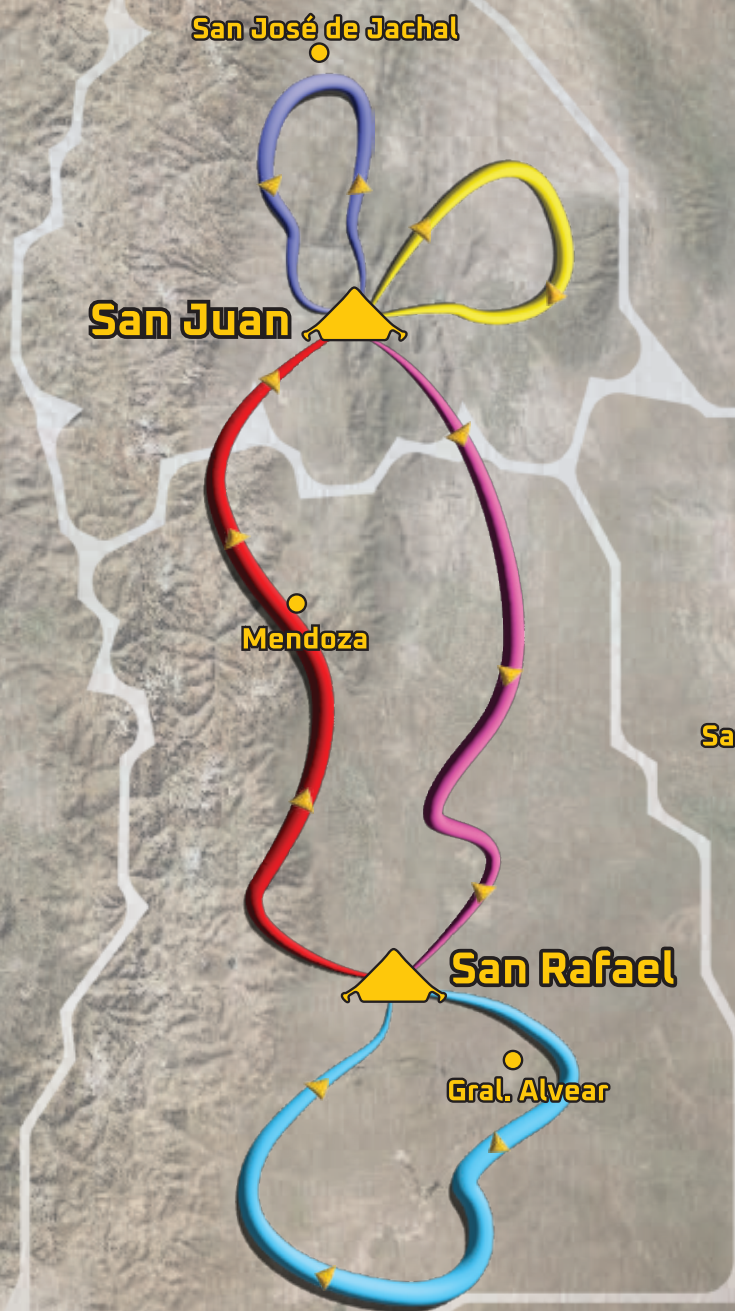
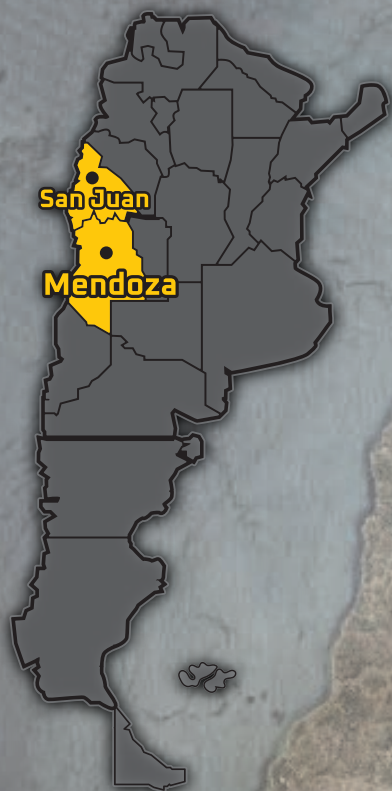
PROGRAMME

Rally Time: GMT -3
subject to modifications

Date – Time	Activity	Place	Date – Time	Activity	Place
Monday, December 1	ENTRIES OPEN	Event Website	08:00 - 17:00 hrs	Collection of rally safety tracking system	Autódromo San Juan Villicum
Thursday, February 12	Media Permanent Accreditations open	Event Website	09:00 - 18:00 hrs	Scrutineering for FIA (Optional for W2RC crews) & FIM	Autódromo San Juan Villicum
Saturday, February 28	Rally Guide publication	Event website & Sportity		Pre-scrutineering available for W2RC crews upon request	Autódromo San Juan Villicum
Monday, March 16	Closing date for entries at reduced fee	Event Website	14:00 - 15:30 hrs	Private Test for FIM (optional)	Albardón
Saturday, March 28	Publication of supplementary regulations	Event website & Sportity	15:30 - 17:00 hrs	Private Test for FIA / OPEN (optional)	Albardón
Monday, May 4	Closing date for entries	Event Website	20:00 hrs	Welcome cocktail for competitors	Teatro Bicentenario
Tuesday, May 12	Closing of Media Permanent accreditations Publication of entry list	Event Website Event website & Sportity		General Briefing and photo team (compulsory)	Sportity
Friday, May 22				Publication of list of FIM riders authorized to start	Sportity
09:00 hs - 17:00 hrs	Bivouac opening	Autódromo San Juan Villicum	Sunday, May 24	Publication of start list for FIM Prologue	Sportity
10:00 hs - 15:00 hrs	Administrative Checks for Open and Desafío Ansenuza Pre Administrative Checks available for FIA & FIM crews upon request	Autódromo San Juan Villicum Autódromo San Juan Villicum	8:00 - 11:00 hrs	Administrative Checks for FIA W2RC crews	Autódromo San Juan Villicum
11:00 - 16:00 hrs	Scrutineering for Open and Desafío Ansenuza Pre-scrutineering available for FIA & FIM crews upon request	Autódromo San Juan Villicum Autódromo San Juan Villicum	8:30 - 11:30 hrs	Scrutineering for FIA W2RC crews	Autódromo San Juan Villicum
Saturday, May 23			TBD	Re-Scrutineering for FIA vehicles which did not pass scrutineering	Autódromo San Juan Villicum
09:00 - 17:00 hrs	HQ opening	Autódromo San Juan Villicum	9:00 hrs	First FIM Jury meeting	Autódromo San Juan Villicum
09:00 - 17:00 hrs	Media Center and Media Accreditation opening	Autódromo San Juan Villicum	11:00 hrs	Team Managers meeting (by invitation only)	Autódromo San Juan Villicum
08:00 - 17:00 hrs	Administrative checks for FIA (Optional for W2RC crews) & FIM Collection of material and documents	Autódromo San Juan Villicum Autódromo San Juan Villicum	TBD	Publication of list of FIA crews authorized to start	Sportity
			12:00 - 14:00 hs	PROLOGUE (For FIM competitors, OPEN -after the last bike- and Ansenuza -after the last OPEN)	Albardón
			14:00 - 16:00 hs	Shakedown (For FIA competitors - Optional)	Albardón
			16:00 hs	Publication of Prologue provisional classification	Sportity
			TBD	Publication of starting order list for FIA / FIM ceremonial start and stage 1 FIA	Sportity
			17:30 hrs	Pre-Start holding area opens	Teatro Bicentenario
			18:00 hrs	Autograph session	Teatro Bicentenario
			18:30 hrs	Pre-Start holding area closes	Teatro Bicentenario
			18:30 hrs	Pre-Event Press Conference	Teatro Bicentenario
			19:10 hrs	FIM Selection of starting order for Stage 1	Teatro Bicentenario
			19:20 hrs	Ceremonial start-ramp	Teatro Bicentenario
			20:00 hrs	Publication of starting order for FIM Stage 1	Sportity

Date – Time	Activity	Place	Date – Time	Activity	Place
Monday, May 25	Stage 1: SAN JUAN - SAN JUAN		Thursday, May 28	Stage 4: SAN RAFAEL (MENDOZA) - SAN JUAN	
TBA	Start Stage 1 (Estimated time 1st bike Biv-out)	Autódromo San Juan Villicum	TBA	Start Stage 4 (Estimated time 1st bike Biv-out)	Centro de Congresos y Exposiciones
TBA	Start Stage 1 (Estimated time 1st car Biv-out)	Autódromo San Juan Villicum	TBA	Start Stage 4 (Estimated time 1st car Biv-out)	Centro de Congresos y Exposiciones
TBA	Finish Stage 1 (Estimated time 1st bike Biv-in)	Autódromo San Juan Villicum	TBA	Finish Stage 4 (Estimated time 1st bike Biv-in)	Autódromo San Juan Villicum
TBA	Finish Stage 1 (Estimated time 1st car Biv-in)	Autódromo San Juan Villicum	TBA	Finish Stage 4 (Estimated time 1st car Biv-in)	Autódromo San Juan Villicum
19:00 hrs	Publication of stage classification	Sportity	19:00 hrs	Publication of stage classification	Sportity
20:00 hrs	Competitors Briefing	Autódromo San Juan Villicum	20:00 hrs	Competitors Briefing	Autódromo San Juan Villicum
20:30 hrs	W2RC Medal Ceremony	Autódromo San Juan Villicum	20:30 hrs	W2RC Medal Ceremony	Autódromo San Juan Villicum
20:30 hrs	Publication of starting list Stage 2	Sportity	20:30 hrs	Publication of starting list Stage 5	Sportity
Tuesday, May 26	Stage 2: SAN JUAN - SAN RAFAEL (MENDOZA)		Friday, May 29	Stage 5: SAN JUAN - SAN JUAN	
TBA	Start Stage 2 (Estimated time 1st bike Biv-out)	Autódromo San Juan Villicum	TBA	Start Stage 5 (Estimated time 1st bike Biv-out)	Autódromo San Juan Villicum
TBA	Start Stage 2 (Estimated time 1st car Biv-out)	Autódromo San Juan Villicum	TBA	Start Stage 5 (Estimated time 1st car Biv-out)	Autódromo San Juan Villicum
TBA	Finish Stage 2 (Estimated time 1st bike Biv-in)	Centro de Congresos y Exposiciones	TBA	Finish Stage 5 (Estimated time 1st bike Biv-in)	Autódromo San Juan Villicum
TBA	Finish Stage 2 (Estimated time 1st car Biv-in)	Centro de Congresos y Exposiciones	TBA	Finish Stage 5 (Estimated time 1st car Biv-in)	Autódromo San Juan Villicum
19:00 hrs	Publication of stage classification	Sportity		Final scrutineering, immediately after	Autódromo San Juan Villicum
20:00 hrs	Competitors Briefing	Centro de Congresos y Exposiciones	TBA	Post-Event Press Conference	Teatro Bicentenario
20:30 hrs	W2RC Medal Ceremony	Centro de Congresos y Exposiciones	TBA	Publication of the provisional classification	Sportity
20:30 hrs	Publication of starting list Stage 3	Sportity	TBA	Podium - Prize giving ceremony	Teatro Bicentenario
Wednesday, May 27	Stage 3: SAN RAFAEL - SAN RAFAEL (MENDOZA)		TBA	Publication of the provisional classification "after the stewards have declared the Classification final"	Sportity
TBA	Start Stage 3 (Estimated time 1st bike Biv-out)	Centro de Congresos y Exposiciones			
TBA	Start Stage 3 (Estimated time 1st car Biv-out)	Centro de Congresos y Exposiciones			
TBA	Finish Stage 3 (Estimated time 1st bike Biv-in)	Centro de Congresos y Exposiciones			
TBA	Finish Stage 3 (Estimated time 1st car Biv-in)	Centro de Congresos y Exposiciones			
19:00 hrs	Publication of stage classification	Sportity			
20:00 hrs	Competitors Briefing	Centro de Congresos y Exposiciones			
20:30 hrs	W2RC Medal Ceremony	Centro de Congresos y Exposiciones			
20:30 hrs	Publication of starting list Stage 4	Sportity			

THE RACE



2026 edition will feature a significant variety of terrains, where sand will be the key player.

24/05/26	FIM Prologue / FIA Shakedown Ceremony of Start	
25/05/26	STAGE 1	San Juan - San Juan
26/05/26	STAGE 2	San Juan - San Rafael
27/05/26	STAGE 3	San Rafael - San Rafael
28/05/26	STAGE 4	San Rafael - San Juan
29/05/26	STAGE 5	San Juan - San Juan Prize Giving Ceremony



PROLOGUE

SAN JUAN
SAN JUAN

24 / 05 / 26



SS 1

SAN JUAN SAN JUAN

25 / 05 / 26

70% GRAVEL 10% SAND 20% CHOTT



SS 2

SAN JUAN

SAN RAFAEL

26 / 05 / 26

	30% GRAVEL		25% SAND		25% CHOTT
	5% DUNES		15% ASPHALT		



SS 3

SAN RAFAEL

SAN RAFAEL

27 / 05 / 26

	30% GRAVEL		15% SAND
	20% CHOTT		20% DUNES
	10% STONES		5% ASPHALT



SS 4

SAN RAFAEL SAN JUAN

28 / 05 / 26

 **90% GRAVEL**  **10% STONES**



SS 5

SAN JUAN SAN JUAN

29 / 05 / 26



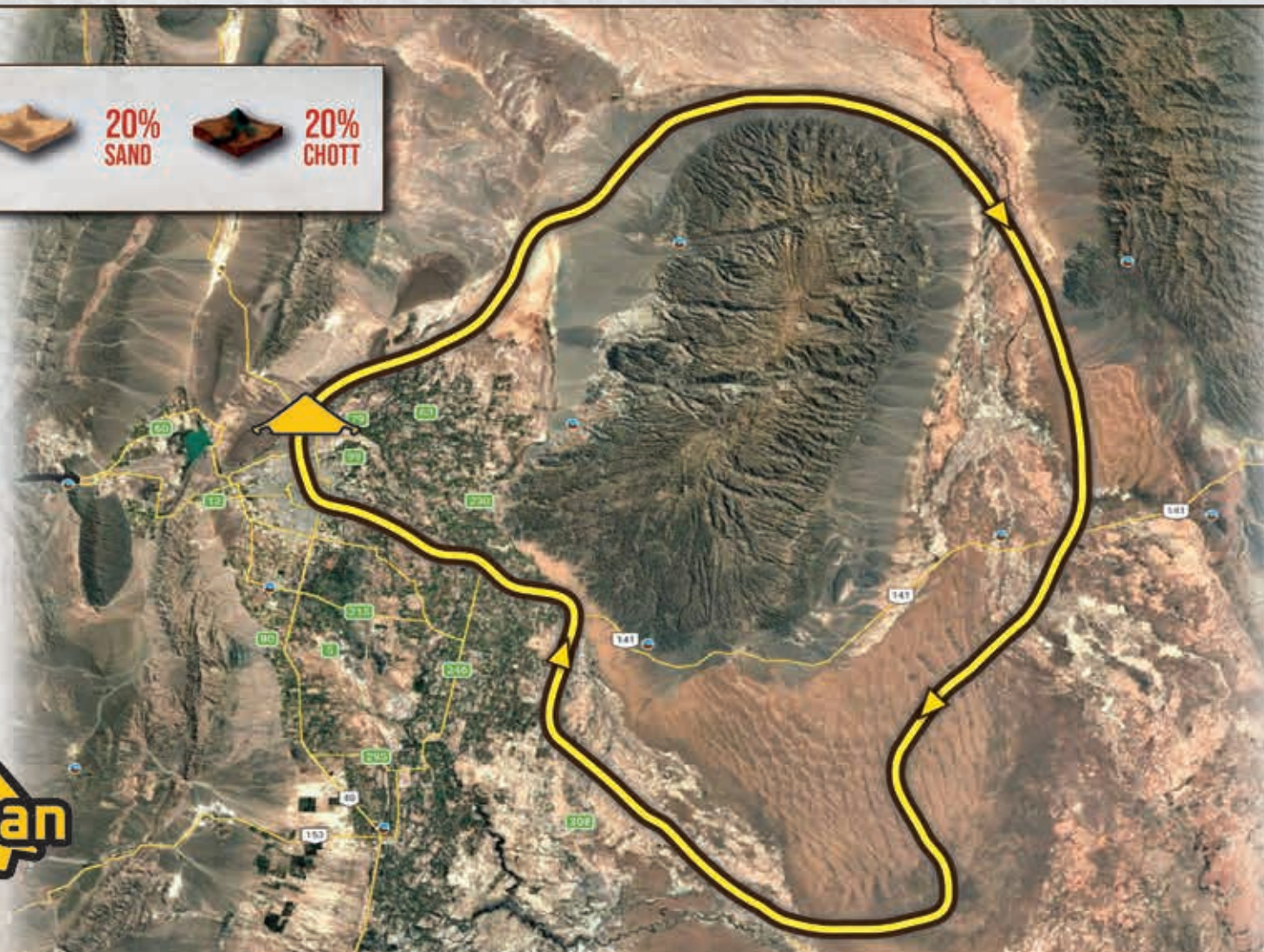
60%
GRAVEL



20%
SAND



20%
CHOTT



TOTAL KM

COMPETITION

Dates	Location	FIA			FIM / OPEN		
		SS	Road Section	Transfer	SS	Road Section	Transfer
May 25	Stage 1 San Juan - San Juan	341 Km	135 Km	-	350,6 Km <small>(Prologue: Road section A: 3,5km SS: 9,6km - Road Section B: 3,4km SS1: 341 Km / Road Section: 135 Km)</small>	141,9Km	-
May 26	Stage 2 San Juan - San Rafael	298 Km	328Km	44 Km <small>(this transfer exceeds 10% of the SS total distance)</small>	298 Km	328Km	44 Km <small>(this transfer exceeds 10% of the SS total distance)</small>
May 27	Stage 3 San Rafael - San Rafael	455 Km	75 Km	-	455 Km	75 Km	-
May 28	Stage 4 San Rafael - San Juan	310 Km	275Km	-	310 Km	275Km	-
May 29	Stage 5 San Juan - San Juan	288 Km	155 Km	-	288 Km	155 Km	-
Total SS km		1.692 Km			1701,6Km		
Total Km (SS + Road Sections)		2.660km			2.667km		

ASSISTANCE

Dates	Location	KM	Dates	Location	KM
May 26	San Juan - San Rafael	421	May 28	San Rafael - San Juan	421

BIVOUACS

San Juan

BIVOUAC: Circuito San Juan Villicum

Address: Ruta Nacional 40 - Km 3481, Albardón - San Juan

GPS: 31°23,910'S - 68°34,065'O

Bivouacs opening hours for the public: TBA

San Rafael (Mendoza province)

BIVOUAC: Centro de Congresos y Exposiciones

Address: Luis Tirasso 1025, San Rafael, Mendoza

GPS: 34°36,637'S - 68°18,490'O

Bivouacs opening hours for the public: TBA



USEFUL INFO & SERVICES

USEFUL INFORMATION

TIME ZONE

GMT -3 (three hours behind Greenwich Mean Time) throughout the country.

LANGUAGE

The official language is Spanish, although most of the people who are in the tourist sector also speak English and Portuguese.

CURRENCY

The official currency is the Argentine Peso.

Exchange rate: For information and recommendations on currency exchange, please contact the local Organizer: competitors@desafioruta40.ar

MEASURING SYSTEM

Meters and kilograms

PHONES: HOW TO DIAL

International Country Code: +54

To call an Argentine mobile phone from abroad, you must add a 9 after the country code. (E.g.; +54 9 XXXX)

POWER

All Argentina: 220V – 50Hz

CLIMATE

In Argentina, the climate is mostly temperate. However, the vast size of the country implies a wide climate diversity, ranging from tropical climates in the northwest to sub-polar in the south.

2026 Desafío Ruta 40 will be held during the autumn of Argentina.

USEFUL INFORMATION

AIR CONNECTIVITY

Argentina has a total of 55 airports that guarantee connectivity throughout the country.

- **Buenos Aires: Ministro Pistarini International Airport (EZE)**

It is the most important airport in Argentina, since most of the international flights to our country have this airport as their destination. It is located in the city of Ezeiza, 22 km away from the City of Buenos Aires.

Address: Autopista Tte. Gral. Ricchieri km 33,5, Buenos Aires

Web: <https://www.aa2000.com.ar/ezeiza>

Phone: (+ 54 11) 5480 6111

- **Buenos Aires city: Aeroparque Jorge Newbery (AEP)**

Located in the northwest area of the city of Buenos Aires, 2 km from downtown. It operates domestic flights and international flights to regional countries.

Address: Av. Rafael Obligado s/nº

Web: <https://www.aa2000.com.ar/aeroparque>

Phone: (+54 11) 5480 6111

- **San Juan: Airport Domingo Faustino Sarmiento (UAQ)**

San Juan Airport is located in the city of Las Chacritas, 15km to the southeast of the city of San Juan. It operates domestic flights.

Address: Ruta Nacional Nº 3, Km 8 - (9400)

Web: <https://www.aa2000.com.ar/sanjuan>

Phone: (54 11) 3987 4150

- **San Rafael: Suboficial Ayudante Santiago Germano International Airport (AFA)**

Suboficial Ayudante Santiago Germano International Airport is located 8 km north of San Rafael's downtown area and 232 km south of the city of Mendoza, the province's capital. It offers non-stop flights to Aeroparque Jorge Newbery.

Address: Ruta Provincial N 143, San Rafael, Mendoza

Web: <https://www.aeropuertosargentina.com/es/AFA>

- **Mendoza: International Airport El Plumerillo (MDZ)**

El Plumerillo International Airport is located 11 km from Mendoza in the Las Heras department, north of the city. It is among the most important airports in Argentina because it connects the country to the Cuyo region and all the neighboring countries. It operates domestic flights as well of international flights.

Address: Ruta Nac. Nº 40, Acceso Norte Km 15 - (5539)

Web: <https://www.aeropuertosargentina.com/es/MDZ>

USEFUL INFORMATION

LAND CONNECTIVITY

Argentina has an extensive network of national and provincial roads across its territory.

It is possible to check the status of all border crossings through this link:

<https://www.argentina.gob.ar/seguridad/pasosinternacionales>

VISA

In general, no visa is required to enter the country. For more information, please check the following list:

<https://www.migraciones.gov.ar/accesible/indexdnm.php?visas>

or contact the consular authority.

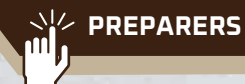
TRAFFIC

Throughout Argentina, local traffic regulations must be observed. In urban areas, the maximum speed is 40km/h on streets, and 60km/h on avenues.

SERVICES

LIST OF PREPARES

Competitors wishing to attend to Desafío Ruta 40 may rely on this list of preparers



(The organisation of DR40 does not intervene in, nor assume responsibility for, the services, working methods, or budgets agreed upon between teams and racers)

MAXXIS RAID+

Exclusive benefit for registered competitors in Desafío Ruta 40 (Offer available for SSV and Challenger categories).



SPORTITY APP

Join DR40
official channels!

Desafio Ruta 40 will use the Sportity app to keep riders and teams updated on the latest race information. Sportity App can be downloaded from Google Play or AppStore. "Push" notifications show any new document that is posted.

Download from:



Then, download the NEW CHANNELS for 2026 edition:

Sportity

For direct event information please download the Sportity app and insert this password:

DR40FIA26

Sportity app is available in

www.sportity.com

Sportity

For direct event information please download the Sportity app and insert this password:

DR40FIM26

Sportity app is available in

www.sportity.com

Sportity

For direct event information please download the Sportity app and insert this password:

DR40OPEN26

Sportity app is available in

www.sportity.com

OFFICIALS

FIM OFFICIALS

FIM Jury President:	Jean-François WULVERYCK
FIM Jury member:	Mahmoud ESSOUSSI
Technical Director:	Andrés ZALAZAR

FMNR Chief Technical Steward:	TBA
Environmental Steward:	TBA
CRO:	Julieta ULIANA

FIA OFFICIALS

Stewards of the Meeting

Chairperson of the Stewards:	Arnas PALIUKENAS
FIA Steward:	Dmitry MAKHENYA
ASN Steward:	Nicolás CAPUTO

FIA Delegates

FIA Sporting Delegate:	Jérôme ROUSSEL
FIA Technical Delegate:	Christophe VELY
FIA Technical Delegate Assistant:	Clément CLERC
FIA Technical Delegate Assistant:	Janez FLERIN

Official Opening Car Crew:	Thierry Magnaldi Jean-Paul Cottret
-----------------------------------	---------------------------------------

Senior Officials

General Coordinator:	David ELI
FIA Clerk of the Course:	Benoit SOULAS
W2RC Coordinator:	Alexis RIOLAND
Chief Safety Officer:	Daniel BARBERO
Responsible for the route:	Pablo ELI
Chief Scrutineer:	Leonardo AGUIRRE
Chief Medical Officer:	Javier OCANTO
Event Media Manager:	Belén OTERO
Results:	MATSPORT
Logistics:	Guillermo ELI
GPS, Iritrack, and Sentinel:	Matias DALMASSO
Secretary of the Stewards:	Sonia MARTINEZ
Event Secretary:	Alicia MARTIN
CRO FIA:	Rubina MARTIN

OPEN OFFICIALS

Sports Stewards

FRAD Steward:	Diego Nehuertz
----------------------	----------------

Principal Officials

General Coordinator:	David ELI
Clerk of the Course:	Nelson Sicilia
Safety Coordinator:	Daniel BARBERO
Responsible for the route:	Pablo ELI

Chief Scrutineer:	TBA
Chief Medical Officer:	Javier OCANTO
Event Media Manager:	Belén OTERO
Results:	MATSPORT
Logistics:	Guillermo ELI
GPS, Iritrack, and Sentinel:	Matias DALMASSO
Event Secretary:	Alicia MARTIN
CRO:	TBA

ACCOMMODATION & RENTAL CARS

For accommodation and rental car solutions for the rally as well excursion, you can rely on our travel agency.

CONTACT

Pablo MIGLIARO

E-mail: maseventosturismo@gmail.com

Phone: +54 9 351 393 9519

MEDIA INFO

MEDIA ACCREDITATIONS

There are 2 types of accreditations:

- **Permanent Accreditation:** Media or Team representative wishing to follow the whole rally transported either by press car, team's vehicle or organization from May 24-29.
- **Daily Accreditation:** For all media outlets representatives (journalists and/or photographers) wishing to come for one up to three stages. (Access of Daily accreditations according to regulations)

Opening date of permanent accreditations: February 12, 2026

Opening date of daily accreditation: April 22, 2026

Closing of Permanent Accreditations: May 12, 2026

Closing of Daily Accreditations: May 20, 2026

Permanent Accreditation: Team Representative

Accreditation fee: €1.100 before March 16. After March 17, €1.200

Permanent Accreditation: Media outlets

Accreditation fee: Free of charge

Permanent Accreditation: Media car

Accreditation fee: According to regulations

Daily Accreditation

Accreditation fee: Free of charge

Footage

Teams and/or sponsors may purchase dedicate footage of the race. For dedicate budget, please contact: prensa@maseventos.com.ar

(Except all registered manufacturers who may purchase official race footage but must contact directly with ASD).



DR40 PRESS REGULATIONS



CONTACTS



SPORTS DIRECTOR AND GENERAL ORGANIZER

Pablo ELI

COMPETITORS RELATIONS OFFICERS

Alicia MARTIN

E-mail: competitors@desafioruta40.ar

TRAVEL AGENCY

Pablo MIGLIARO

E-mail: maseventosturismo@gmail.com

Phone: +54 9 351 393 9519

WAIVER LOGISTICS

Nicolás ALBORNOZ

E-mail: nicolas.albornoz@waiver.com.ar

Phone: +54 911 35037359

W2RC: LOGISTICS

Cédric FOUGERIOL (W2RC)

E-mail: cfougeirol@aso.fr

Phone: +33 6 42 91 99 89

MARLINK

Vincent HERENT

E-mail: services.events@marlink.com

Phone: +33 (0)6.83.14.01.63

ERTF

Cross-Country Rally Department

E-mail: competition@ertf.com

Phone: +33(2) 97 87 07 08

MEDIA

Belén OTERO

E-mail: prensa@maseventos.com.ar



www.desafioruta40.ar

